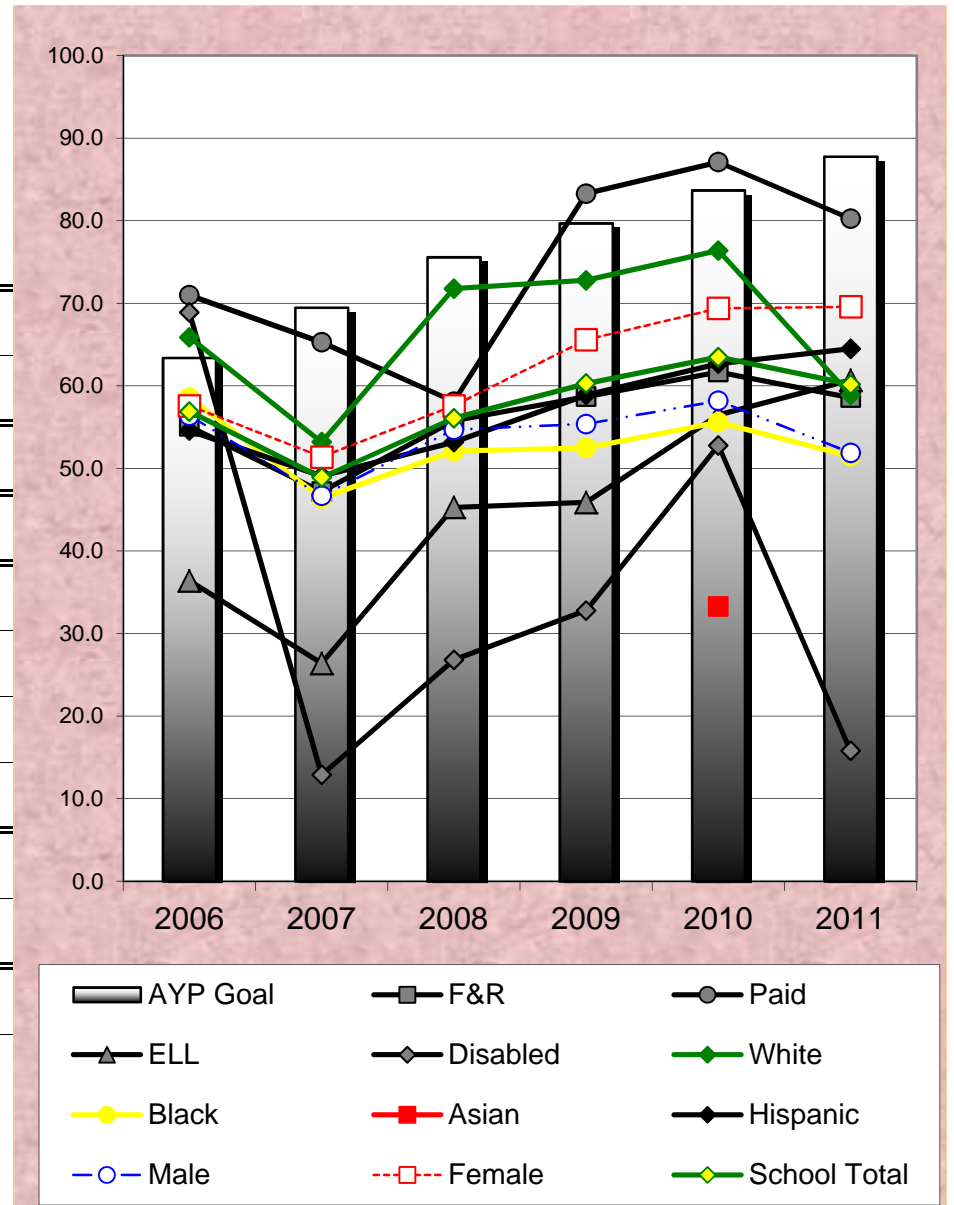


Argentine Middle School

Percent of Students At or Above Proficiency on Kansas Reading Assessment

	2006	2007	2008	2009	2010	2011
AYP Goal	63.4	69.5	75.6	79.7	83.7	87.8
F&R	55.1 472	47.2 479	55.8 419	58.7 436	61.7 433	58.6 514
Paid	71.0 62	65.3 49	58.1 43	83.3 30	87.1 33	80.3 41
ELL	36.4 170	26.4 163	45.3 234	45.9 194	56.5 230	60.7 280
Disabled	68.9 58	12.9 62	26.8 56	32.8 61	52.8 72	15.8 95
White	65.9 94	53.2 94	71.8 85	72.8 92	76.4 89	58.9 95
Black	58.6 104	46.4 84	52.1 73	52.5 80	55.6 81	51.5 97
Asian					33.3 12	
Hispanic	54.6 322	49.1 342	53.2 295	58.9 285	62.7 279	64.5 341
Male	56.4 298	46.7 285	54.7 245	55.4 242	58.2 244	51.9 295
Female	57.6 236	51.4 243	57.6 217	65.6 224	69.4 222	69.6 260
School Total	56.9	48.9	56.1	60.3	63.5	60.2
Number Tested	534	528	462	466	466	555

Small font numbers for each group indicate group size.
Results are not reported for student groups smaller than 10 members.

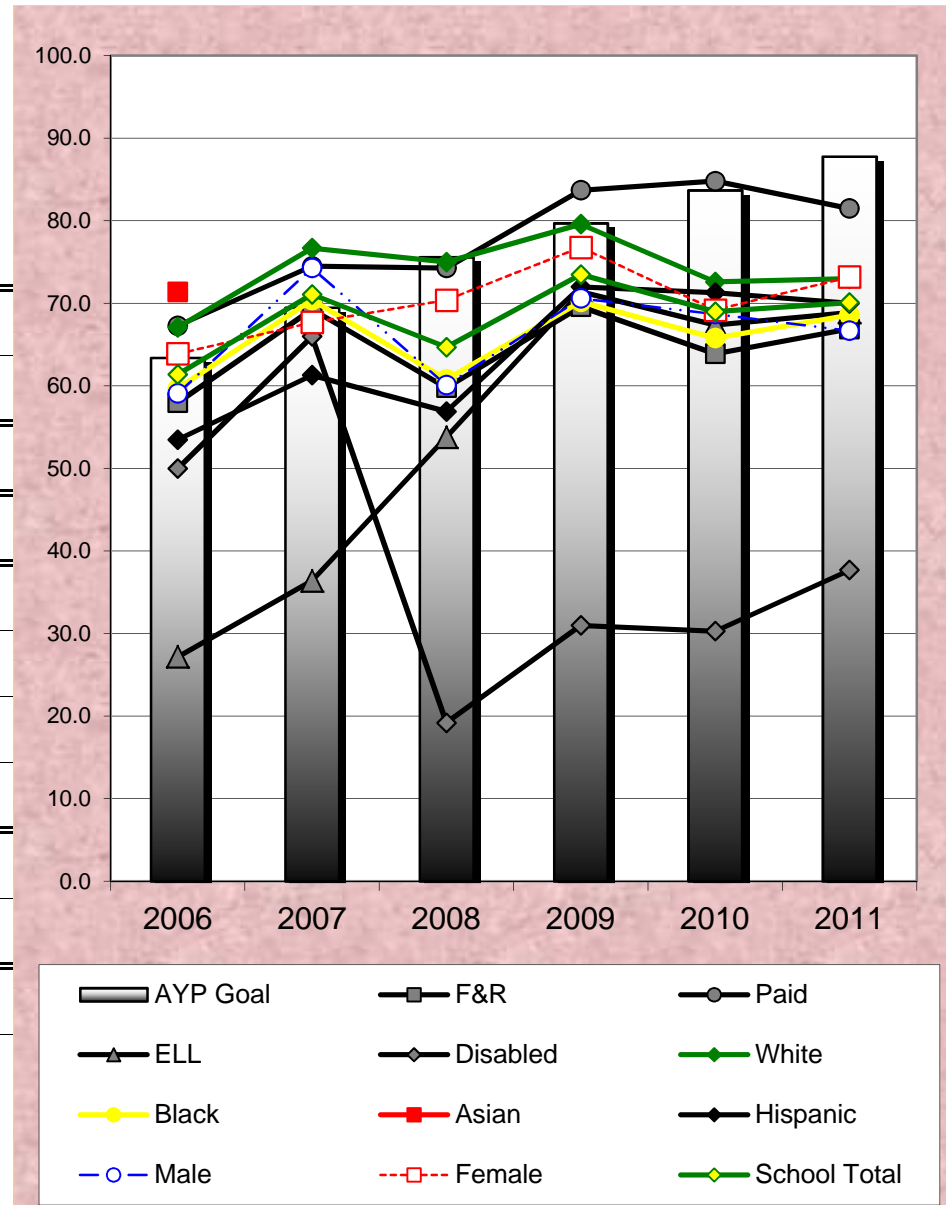


Arrowhead Middle School

Percent of Students At or Above Proficiency on Kansas Reading Assessment

	<u>2006</u>	<u>2007</u>	<u>2008</u>	<u>2009</u>	<u>2010</u>	<u>2011</u>
AYP Goal	63.4	69.5	75.6	79.7	83.7	87.8
F&R	58.0 288	69.3 313	59.8 266	69.6 339	63.9 363	66.9 381
Paid	67.3 168	74.5 157	74.3 136	83.7 129	84.8 117	81.5 107
ELL	27.2 12	36.4 11	53.8 26	71.4 42	67.4 46	68.9 61
Disabled	50.0 60	66.0 47	19.2 52	31.0 58	30.3 66	37.7 61
White	67.1 128	76.7 120	75.0 116	79.6 137	72.6 135	73.0 126
Black	59.7 261	70.4 280	60.8 227	70.2 245	65.8 243	68.6 255
Asian	71.4 10					
Hispanic	53.5 56	61.3 62	56.9 51	72.0 75	71.3 87	70.0 90
Male	59.1 237	74.3 241	60.1 223	70.6 248	68.7 246	66.7 234
Female	63.9 219	67.7 229	70.4 179	76.8 220	69.2 234	73.2 254
School Total	61.4	71.1	64.7	73.5	69.0	70.1
Number Tested	456	470	402	468	480	488

Small font numbers for each group indicate group size.
Results are not reported for student groups smaller than 10 members.

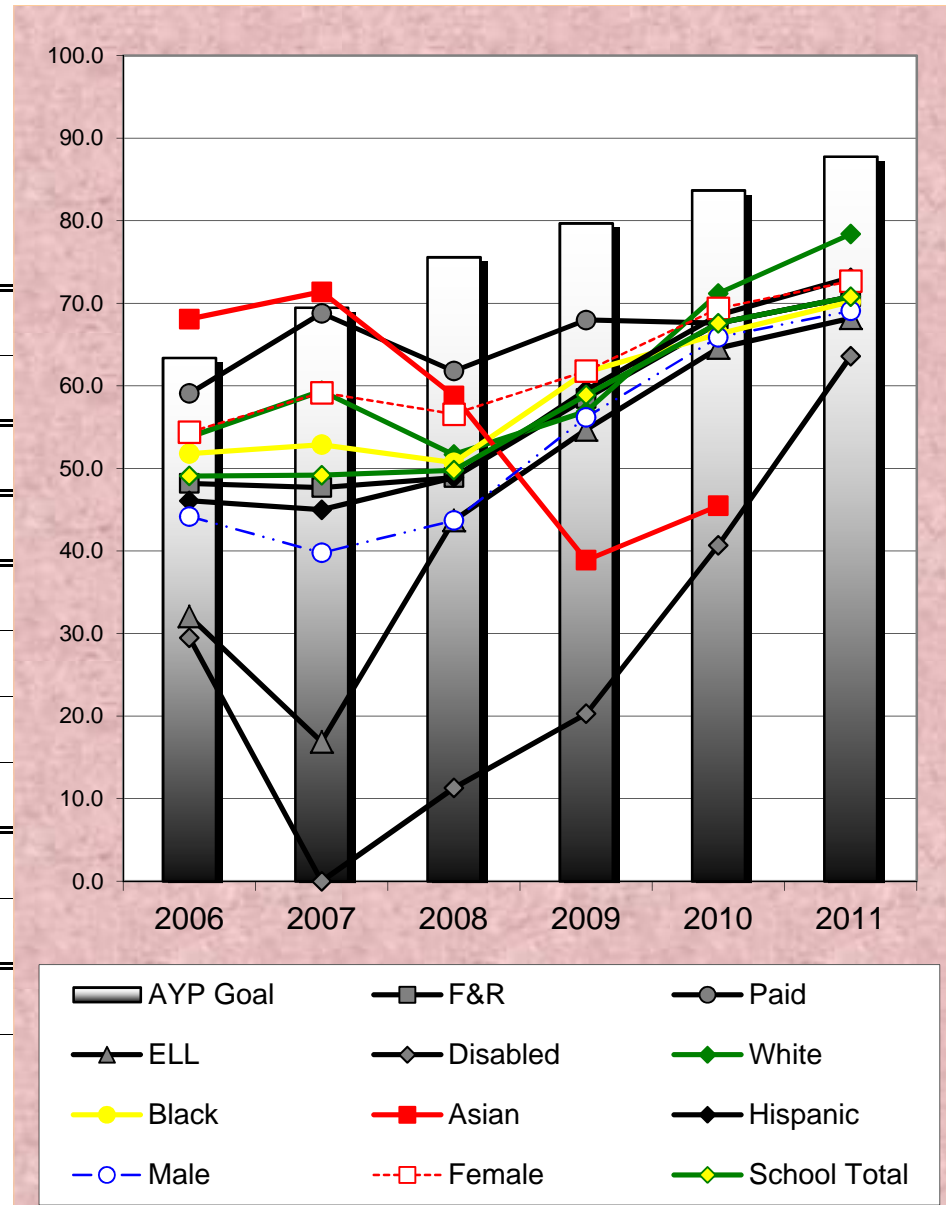


Central Middle School

Percent of Students At or Above Proficiency on Kansas Reading Assessment

	<u>2006</u>	<u>2007</u>	<u>2008</u>	<u>2009</u>	<u>2010</u>	<u>2011</u>
AYP Goal	63.4	69.5	75.6	79.7	83.7	87.8
F&R	48.2 475	47.7 442	48.9 446	58.5 484	67.6 525	70.8 497
Paid	59.1 44	68.8 32	61.8 34	68.0 25	67.6 22	70.8 20
ELL	32.1 205	16.9 166	43.7 286	54.7 318	64.6 359	68.2 337
Disabled	29.5 44	11.3 53	20.3 64	40.7 81	63.6 88	63.6 88
White	53.8 78	59.4 69	51.7 60	56.9 51	71.2 52	78.4 51
Black	51.8 83	52.9 68	50.7 71	61.7 60	66.3 80	70.2 57
Asian	68.1 24	71.4 14	58.8 17	38.9 18	45.5 22	45.5 22
Hispanic	46.1 334	45.0 322	48.9 331	59.5 378	68.6 389	73.1 376
Male	44.2 267	39.8 246	43.7 252	56.2 260	65.9 279	69.1 272
Female	54.4 252	59.2 228	56.6 228	61.8 249	69.4 268	72.7 245
School Total	49.1	49.2	49.8	58.9	67.6	70.8
Number Tested	519	474	480	509	547	517

Small font numbers for each group indicate group size.
Results are not reported for student groups smaller than 10 members.

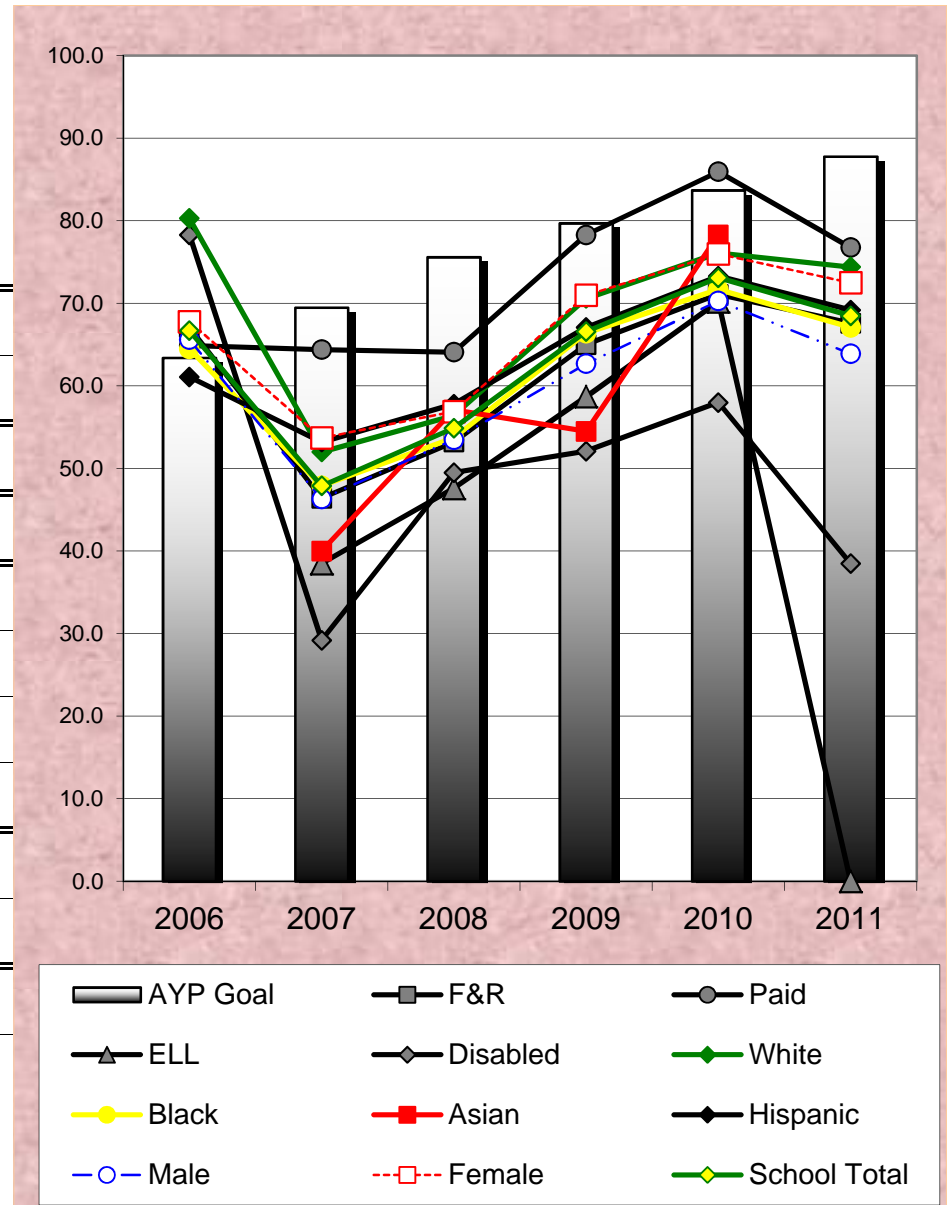


Coronado Middle School

Percent of Students At or Above Proficiency on Kansas Reading Assessment

	<u>2006</u>	<u>2007</u>	<u>2008</u>	<u>2009</u>	<u>2010</u>	<u>2011</u>
AYP Goal	63.4	69.5	75.6	79.7	83.7	87.8
F&R	67.1 252	46.4 265	53.2 333	65.0 346	71.1 360	67.6 349
Paid	64.9 57	64.4 59	64.1 64	78.3 46	86.0 56	76.8 38
ELL		38.5 13	47.6 63	58.7 63	70.2 94	64.4 90
Disabled	78.3 60	29.2 65	49.5 99	52.1 96	58.0 81	38.5 65
White	80.3 51	52.0 50	56.4 55	70.6 51	76.1 46	74.4 43
Black	64.5 206	47.9 213	53.7 244	66.4 232	71.7 237	67.1 210
Asian		40.0 10	57.1 14	54.5 22	78.3 23	
Hispanic	61.1 36	53.2 47	57.8 83	67.1 85	73.3 105	69.2 104
Male	65.6 160	46.3 177	53.5 230	62.7 209	70.3 212	63.9 183
Female	67.8 149	53.7 147	56.9 167	71.0 183	76.0 204	72.5 204
School Total	66.7	47.9	54.9	66.6	73.1	68.5
Number Tested	309	324	397	392	416	387

Small font numbers for each group indicate group size.
Results are not reported for student groups smaller than 10 members.

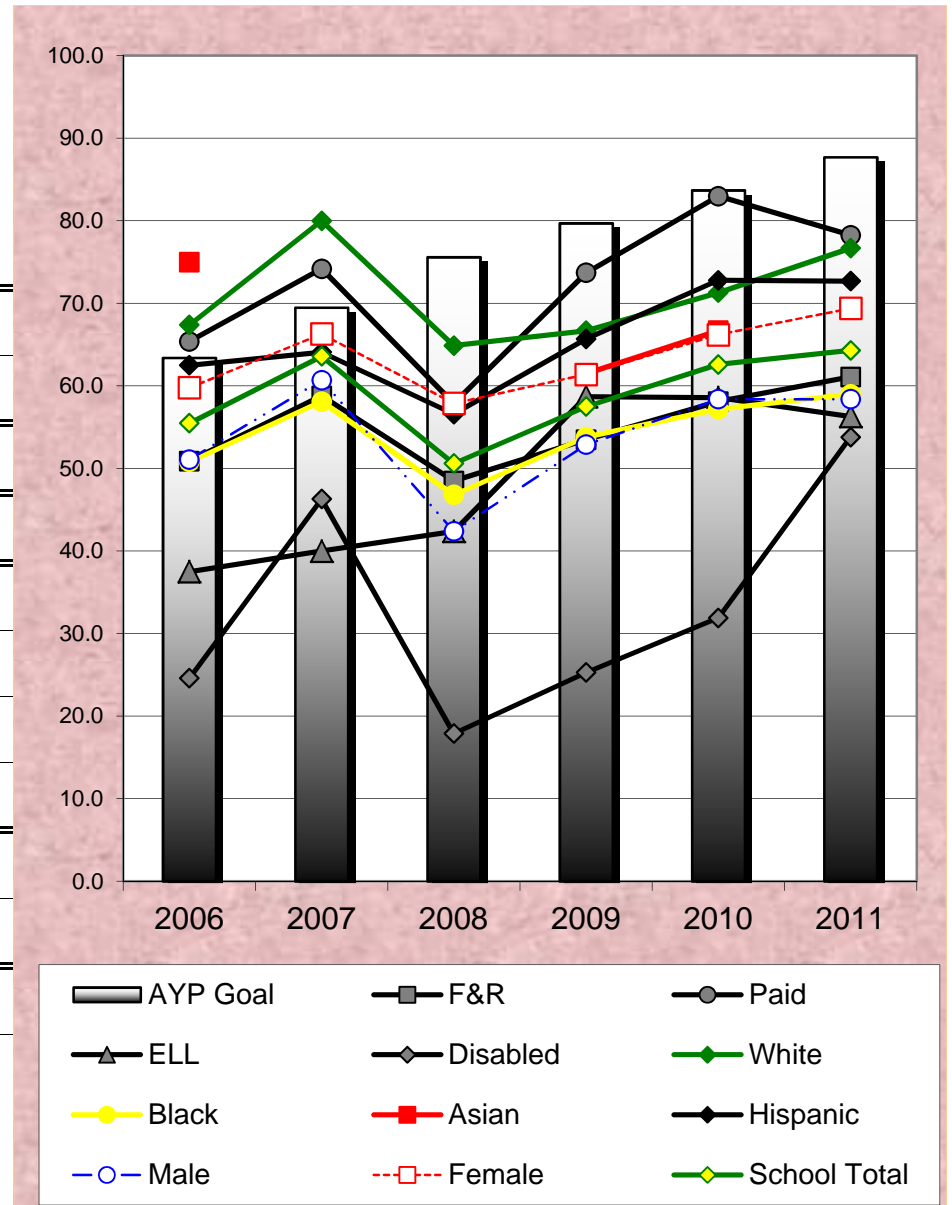


Eisenhower Middle School

Percent of Students At or Above Proficiency on Kansas Reading Assessment

	<u>2006</u>	<u>2007</u>	<u>2008</u>	<u>2009</u>	<u>2010</u>	<u>2011</u>
AYP Goal	63.4	69.5	75.6	79.7	83.7	87.7
F&R	50.9 387	58.8 352	48.5 421	53.5 398	58.1 453	61.1 406
Paid	65.4 182	74.2 159	57.9 126	73.7 99	83.0 100	78.3 93
ELL	37.5 12	40.0 10	42.4 33	58.7 46	58.6 58	56.3 48
Disabled	24.6 81	46.3 80	17.9 95	25.3 79	31.9 94	53.8 91
White	67.4 123	80.0 105	64.9 77	66.7 72	71.3 80	76.7 73
Black	50.8 405	58.1 356	46.8 402	53.8 342	57.2 346	59.0 310
Asian	75.0 10			61.5 13	66.7 15	
Hispanic	62.5 32	64.1 39	56.6 53	65.7 67	72.8 103	72.7 88
Male	51.1 278	60.7 244	42.4 257	52.9 225	58.4 257	58.4 231
Female	59.8 291	66.3 267	57.9 290	61.4 272	66.2 296	69.4 268
School Total	55.5	63.6	50.6	57.5	62.6	64.3
Number Tested	569	511	547	497	553	499

Small font numbers for each group indicate group size.
Results are not reported for student groups smaller than 10 members.

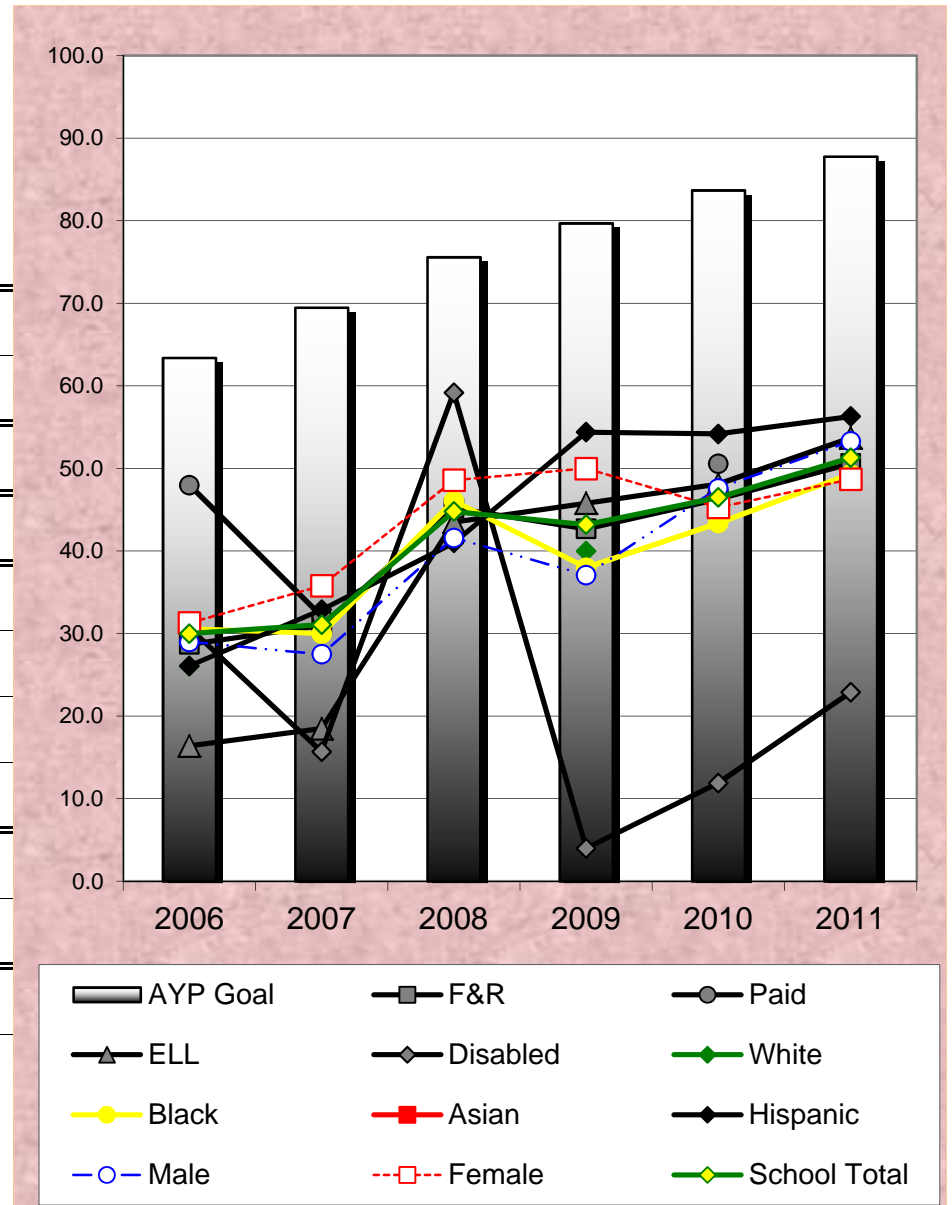


Northwest Middle School

Percent of Students At or Above Proficiency on Kansas Reading Assessment

	<u>2006</u>	<u>2007</u>	<u>2008</u>	<u>2009</u>	<u>2010</u>	<u>2011</u>
AYP Goal	63.4	69.5	75.6	79.7	83.7	87.8
F&R	28.7 <small>355</small>	31.0 <small>287</small>	45.2 <small>221</small>	42.7 <small>241</small>	46.3 <small>326</small>	50.6 <small>344</small>
Paid	48.0 <small>25</small>	32.1 <small>28</small>			50.6 <small>16</small>	
ELL	16.4 <small>67</small>	18.5 <small>54</small>	43.5 <small>46</small>	45.8 <small>48</small>	48.1 <small>79</small>	53.7 <small>108</small>
Disabled	30.7 <small>65</small>	15.7 <small>51</small>	59.2 <small>49</small>	4.0 <small>50</small>	11.9 <small>67</small>	22.9 <small>70</small>
White	26.1 <small>10</small>			40.0 <small>10</small>		
Black	30.6 <small>277</small>	30.0 <small>223</small>	46.1 <small>165</small>	38.0 <small>166</small>	43.4 <small>226</small>	49.3 <small>215</small>
Asian						
Hispanic	26.1 <small>100</small>	32.9 <small>79</small>	41.0 <small>61</small>	54.4 <small>68</small>	54.2 <small>96</small>	56.3 <small>112</small>
Male	29.0 <small>214</small>	27.5 <small>178</small>	41.6 <small>125</small>	37.1 <small>132</small>	47.6 <small>170</small>	53.3 <small>197</small>
Female	31.3 <small>166</small>	35.8 <small>137</small>	48.6 <small>105</small>	50.0 <small>118</small>	45.3 <small>172</small>	48.7 <small>156</small>
School Total	30.0	31.1	44.8	43.2	46.5	51.3
Number Tested	380	315	230	250	342	353

Small font numbers for each group indicate group size.
Results are not reported for student groups smaller than 10 members.

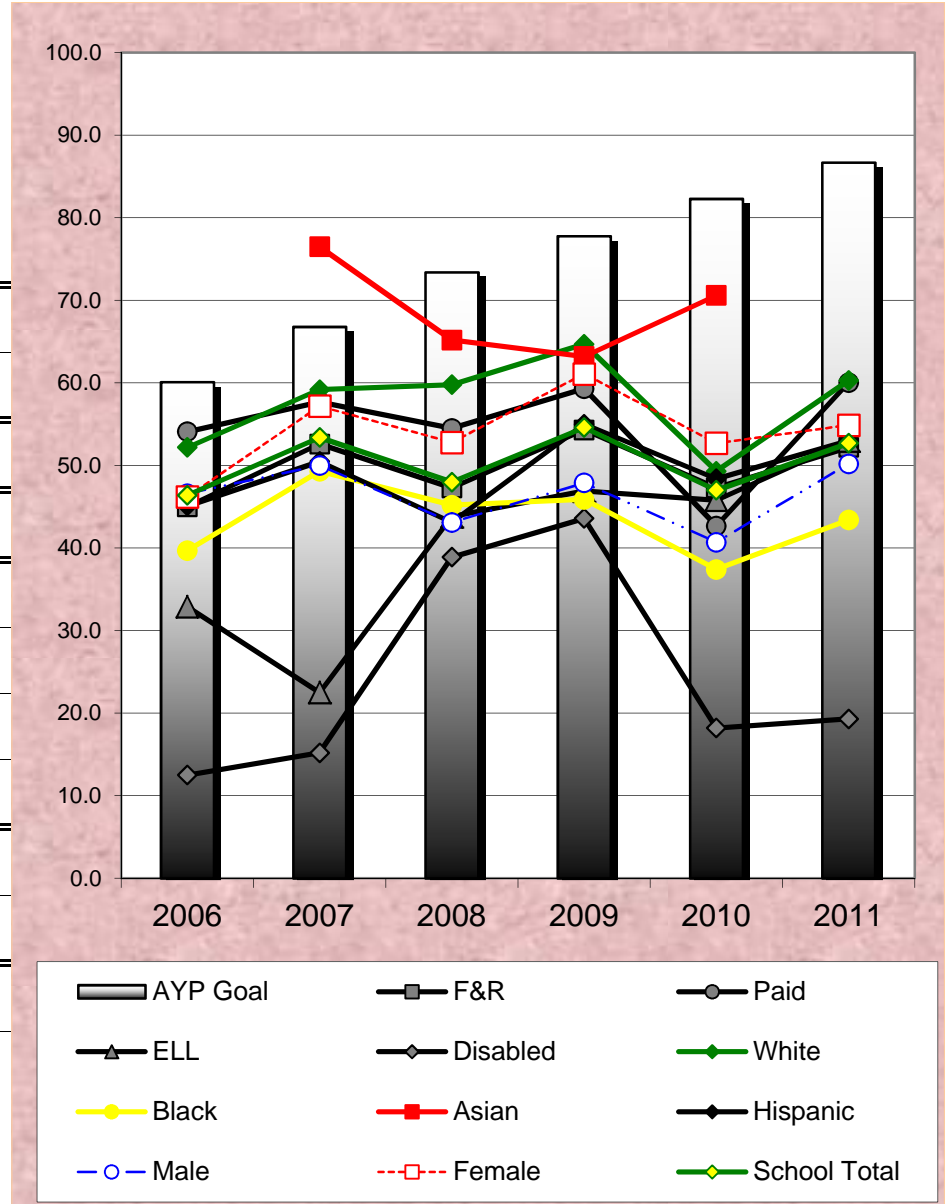


Rosedale Middle School

Percent of Students At or Above Proficiency on Kansas Reading Assessment

	<u>2006</u>	<u>2007</u>	<u>2008</u>	<u>2009</u>	<u>2010</u>	<u>2011</u>
AYP Goal	63.4	69.5	75.6	79.7	83.7	87.8
F&R	46.8 331	47.4 304	43.6 381	51.1 399	54.7 408	57.8 441
Paid	62.3 61	59.6 52	56.8 44	74.1 27	74.0 27	76.6 30
ELL	31.9 97	20.3 69	33.0 176	38.1 176	49.5 216	53.4 251
Disabled	21.4 56	32.6 46	11.1 54	20.0 55	36.8 68	37.8 82
White	55.6 88	60.5 76	57.3 82	65.2 69	68.7 67	69.8 63
Black	46.2 93	47.9 73	45.2 104	50.5 109	55.0 100	59.3 108
Asian		58.8 17	60.9 23	62.5 16	50.0 18	
Hispanic	47.1 195	44.2 190	38.4 216	49.1 232	53.2 250	56.9 283
Male	43.8 208	44.5 191	38.5 208	45.2 210	50.7 211	54.5 222
Female	55.4 184	54.5 165	51.2 217	59.7 216	60.7 224	63.1 249
School Total	49.2	49.2	44.9	52.6	55.9	59.0
Number Tested	392	356	425	426	435	471

Small font numbers for each group indicate group size.
Results are not reported for student groups smaller than 10 members.



West Middle School

Percent of Students At or Above Proficiency on Kansas Reading Assessment

	2006	2007	2008	2009	2010	2011
AYP Goal	63.4	69.5	75.6	79.7	83.7	87.8
F&R	46.8 308	55.1 343	62.9 318	71.3 293	74.3 311	59.6 317
Paid	58.7 63	63.1 65	81.1 37	74.3 35	86.0 29	71.9 28
ELL	31.2 20	25.0 16	66.0 53	73.2 56	80.7 83	64.2 95
Disabled	22.6 53	44.6 65	50.0 68	50.9 53	67.7 65	14.8 81
White	55.3 40	67.5 40	76.2 42	75.0 36	87.9 33	67.5 40
Black	48.3 369	54.4 307	61.5 239	69.0 213	69.2 198	56.9 181
Asian	32.2 31	52.2 23	63.0 27	66.7 21	80.0 25	
Hispanic	60.0 30	62.2 37	71.7 46	80.7 57	83.1 83	65.3 95
Male	47.9 194	52.9 206	61.3 168	66.7 153	72.4 170	55.8 190
Female	49.7 177	59.9 202	67.9 187	76.0 175	78.2 170	66.5 155
School Total	48.8	56.4	64.8	71.6	75.3	60.6
Number Tested	371	408	355	328	340	345

Small font numbers for each group indicate group size.
Results are not reported for student groups smaller than 10 members.

