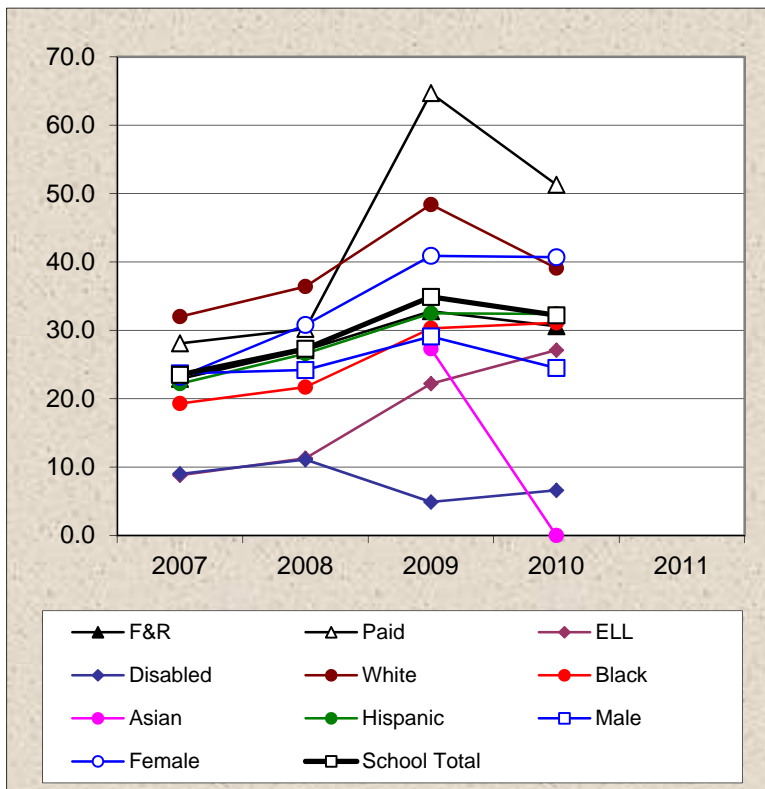


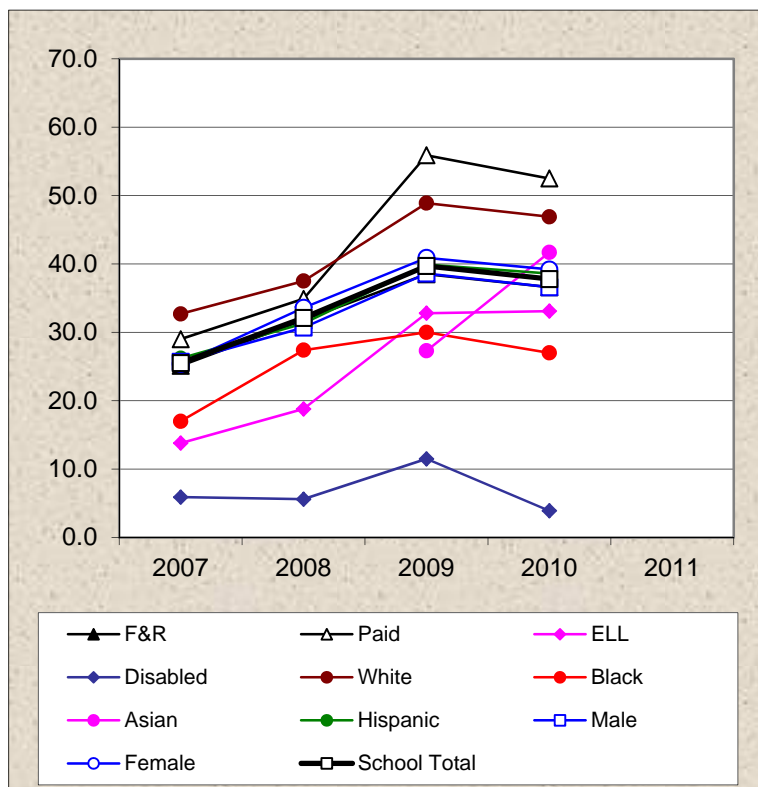
Argentine Middle School

Spring MAP Reading Students At/Above 50th Percentile

	2007	2008	2009	2010	2011
F&R	22.9	27.1	32.8	30.6	
	519	462	467	458	
Paid	28.1	30.2	64.7	51.3	
	64	43	34	39	
ELL	8.8	11.3	22.2	27.1	
	170	151	198	236	
Disabled	9.0	11.1	4.9	6.6	
	67	54	61	76	
White	32.0	36.4	48.4	39.1	
	103	88	91	92	
Black	19.3	21.7	30.3	31.1	
	88	83	89	90	
Asian			27.3	0.0	
			11	12	
Hispanic	22.2	26.6	32.5	32.4	
	383	327	308	284	
Male	23.7	24.2	29.1	24.5	
	312	265	254	261	
Female	23.2	30.8	40.9	40.7	
	271	240	247	236	
School Total	23.5	27.3	34.9	32.2	
Number Tested	584	505	501	497	



Spring MAP Math Students At/Above 50th Percentile

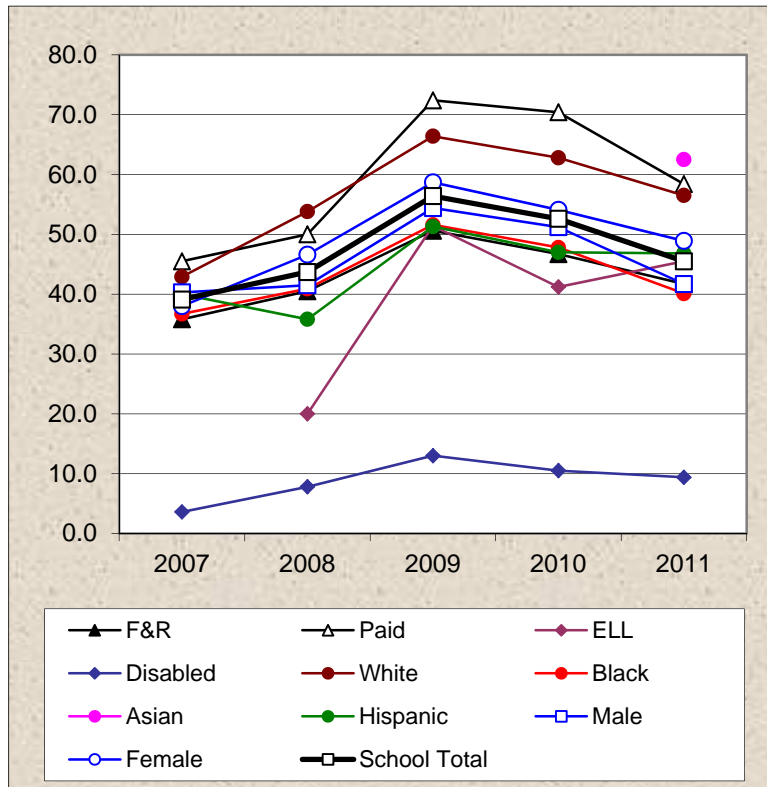


	2007	2008	2009	2010	2011
F&R	25.1	31.8	38.5	36.6	
	521	465	467	462	
Paid	29.0	34.9	55.9	52.5	
	62	43	34	40	
ELL	13.8	18.8	32.8	33.1	
	167	154	198	236	
Disabled	5.9	5.6	11.5	3.9	
	68	54	61	76	
White	32.7	37.5	48.9	46.9	
	104	88	90	96	
Black	17.0	27.4	30.0	27.0	
	88	84	90	89	
Asian			27.3	41.7	
			11	12	
Hispanic	26.2	31.3	39.9	38.6	
	382	329	308	285	
Male	25.7	30.7	38.6	36.6	
	311	267	254	265	
Female	25.4	33.6	40.9	39.2	
	272	241	247	237	
School Total	25.5	32.1	39.7	37.8	
Number Tested	584	508	501	502	

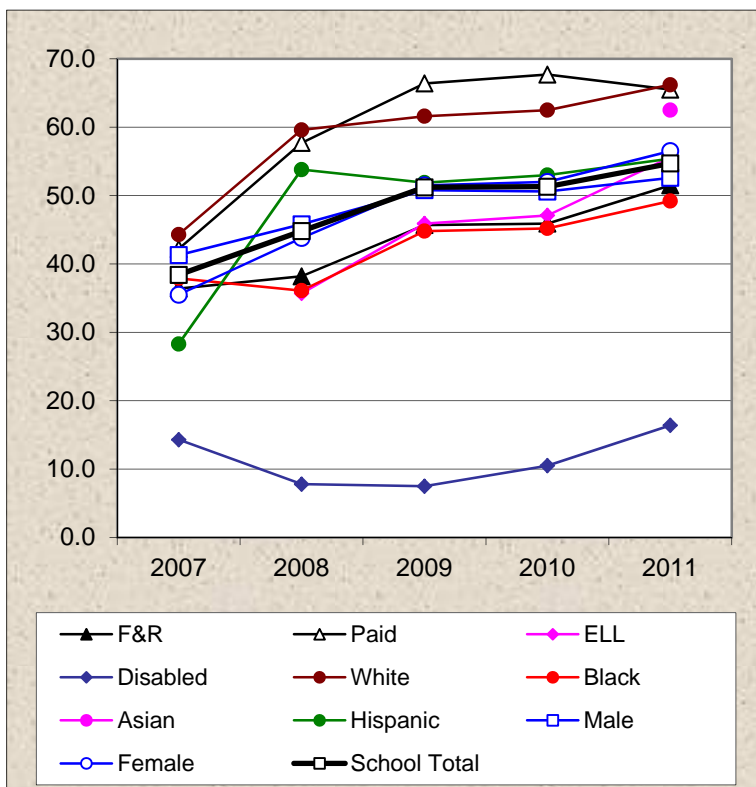
Arrowhead Middle School

Spring MAP Reading Students At/Above 50th Percentile

	2007	2008	2009	2010	2011
F&R	35.8	40.5	50.6	46.7	41.7
	316	279	346	377	403
Paid	45.5	50.0	72.4	70.4	58.4
	167	144	127	125	113
ELL		20.0	51.4	41.2	45.5
		15	37	51	66
Disabled	3.6	7.8	13.0	10.5	9.4
	55	51	54	57	53
White	42.9	53.8	66.4	62.8	56.5
	126	119	137	137	131
Black	36.7	40.9	51.6	47.8	40.1
	289	242	248	251	269
Asian					62.5
					8
Hispanic	40.0	35.8	51.3	47.0	46.8
	60	53	78	83	94
Male	40.3	41.5	54.4	51.2	41.7
	238	234	248	258	254
Female	38.0	46.6	58.7	54.1	48.9
	245	189	225	244	262
School Total	39.1	43.7	56.4	52.6	45.5
Number Tested	483	423	473	502	517



Spring MAP Math Students At/Above 50th Percentile

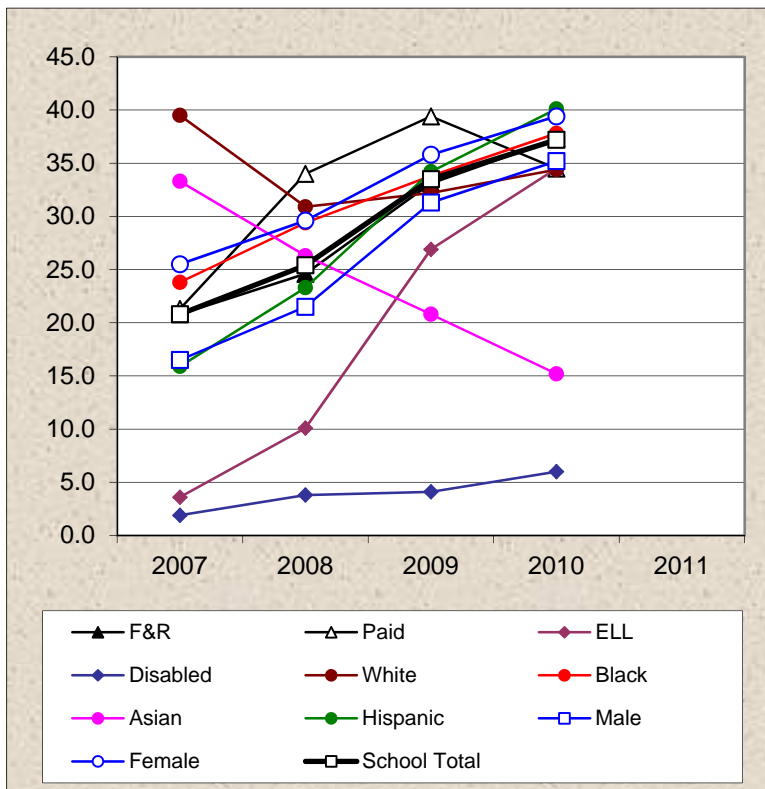


	2007	2008	2009	2010	2011
F&R	36.4	38.2	45.7	45.9	51.5
	308	275	350	375	398
Paid	42.2	57.7	66.4	67.7	65.5
	166	142	125	124	113
ELL		35.7	45.9	47.1	55.6
		14	37	51	63
Disabled	14.3	7.8	7.5	10.5	16.4
	56	51	53	57	55
White	44.3	59.6	61.6	62.5	66.2
	122	114	138	136	130
Black	37.9	36.1	44.8	45.2	49.2
	285	241	248	250	266
Asian					62.5
					8
Hispanic	28.3	53.8	51.9	53.0	55.4
	60	52	79	83	92
Male	41.3	45.8	50.8	50.6	52.6
	240	225	246	255	251
Female	35.5	43.8	51.5	52.0	56.5
	234	192	229	244	260
School Total	38.4	44.8	51.2	51.3	54.7
Number Tested	474	417	475	499	512

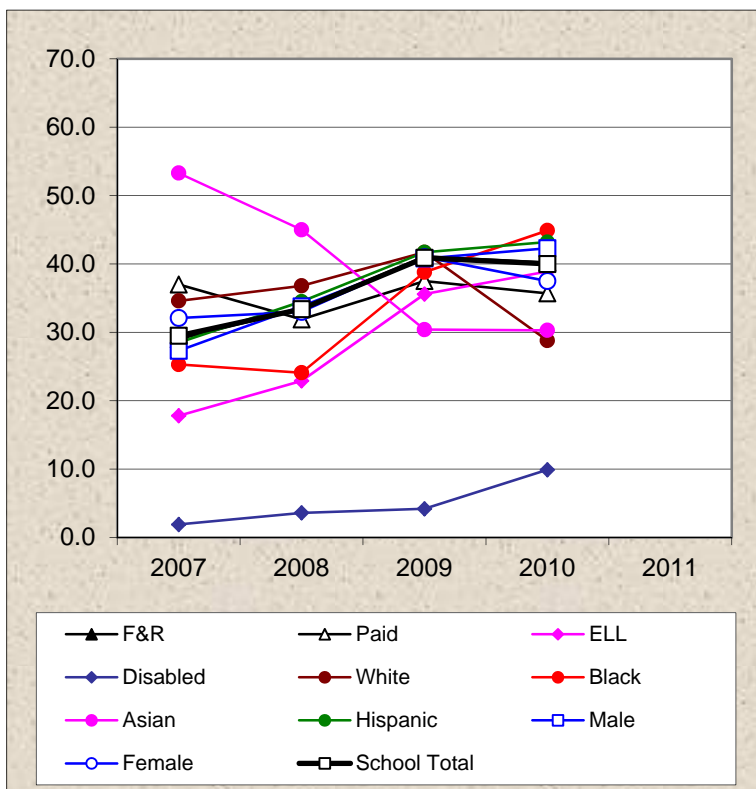
Central Middle School

Spring MAP Reading Students At/Above 50th Percentile

	2007	2008	2009	2010	2011
F&R	20.8	24.6	33.1	37.3	
	504	488	526	573	
Paid	21.3	34.0	39.4	34.5	
	47	47	33	29	
ELL	3.6	10.1	26.9	34.5	
	196	238	342	385	
Disabled	1.9	3.8	4.1	6.0	
	52	53	74	84	
White	39.5	30.9	32.2	34.4	
	81	68	59	61	
Black	23.8	29.4	33.8	37.8	
	80	85	68	82	
Asian	33.3	26.3	20.8	15.2	
	15	19	24	33	
Hispanic	15.9	23.3	34.2	40.1	
	372	361	406	399	
Male	16.5	21.5	31.3	35.2	
	284	275	291	315	
Female	25.5	29.6	35.8	39.4	
	267	260	268	287	
School Total	20.8	25.4	33.5	37.2	
Number Tested	553	535	559	602	



Spring MAP Math Students At/Above 50th Percentile

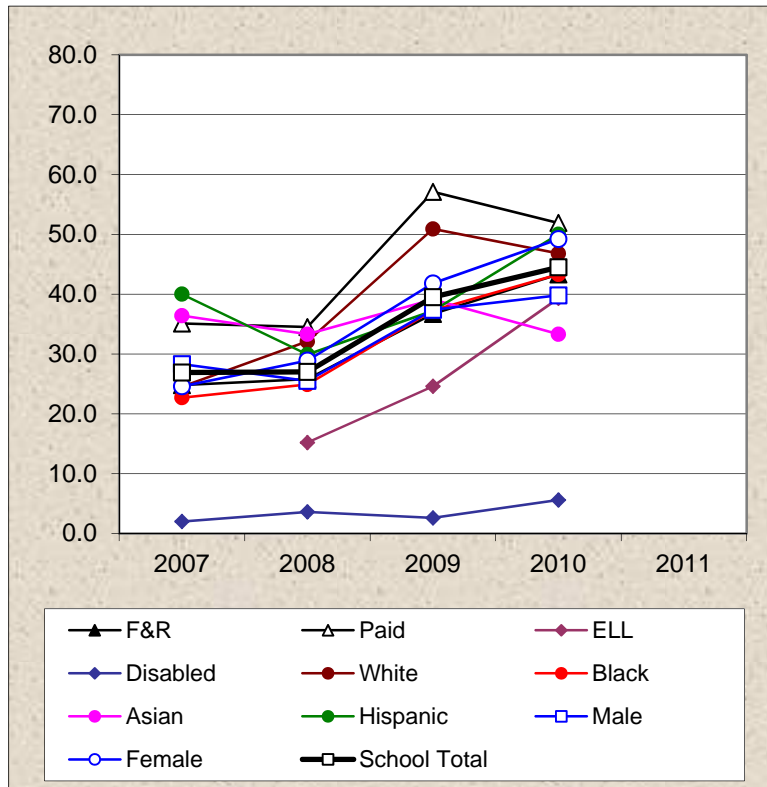


	2007	2008	2009	2010	2011
F&R	29.0	33.5	41.1	40.2	
	497	504	518	557	
Paid	37.0	31.9	37.5	35.7	
	46	47	32	28	
ELL	17.8	22.9	35.6	38.9	
	191	249	334	375	
Disabled	1.9	3.6	4.2	9.9	
	53	56	71	81	
White	34.6	36.8	41.7	28.8	
	81	68	60	61	
Black	25.3	24.1	38.8	44.9	
	79	87	67	78	
Asian	53.3	45.0	30.4	30.3	
	15	20	23	33	
Hispanic	28.5	34.5	41.7	43.2	
	365	374	398	389	
Male	27.3	33.8	40.8	42.3	
	278	284	282	300	
Female	32.1	33.0	41.0	37.5	
	265	267	268	285	
School Total	29.5	33.4	40.9	40.0	
Number Tested	545	551	550	585	

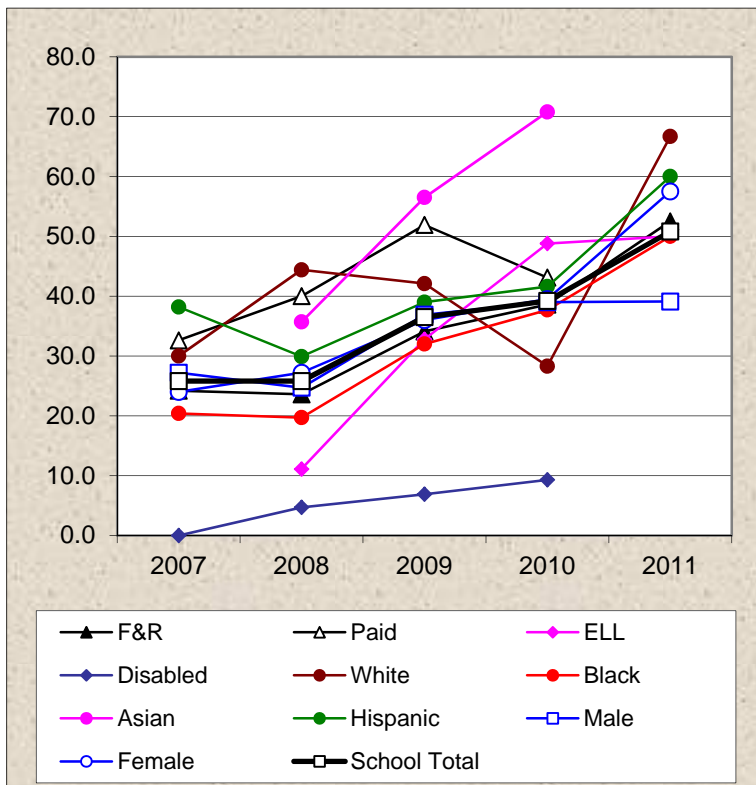
Coronado Middle School

Spring MAP Reading Students At/Above 50th Percentile

	2007	2008	2009	2010	2011
F&R	24.8	25.8	36.7	43.3	
	258	364	357	328	
Paid	35.1	34.5	57.1	51.9	
	57	55	56	52	
ELL		15.2	24.6	39.3	
		46	61	84	
Disabled	2.0	3.6	2.6	5.6	
	51	83	78	54	
White	24.5	32.1	50.9	46.8	
	49	53	55	47	
Black	22.7	24.9	37.3	43.3	
	207	261	255	210	
Asian	36.4	33.3	39.1	33.3	
	11	15	23	24	
Hispanic	40.0	29.9	37.2	50.0	
	45	87	78	90	
Male	28.3	25.5	37.4	39.8	
	173	239	219	191	
Female	24.6	28.9	41.8	49.2	
	142	180	194	189	
School Total	26.9	27.0	39.5	44.5	
Number Tested	316	419	413	380	



Spring MAP Math Students At/Above 50th Percentile

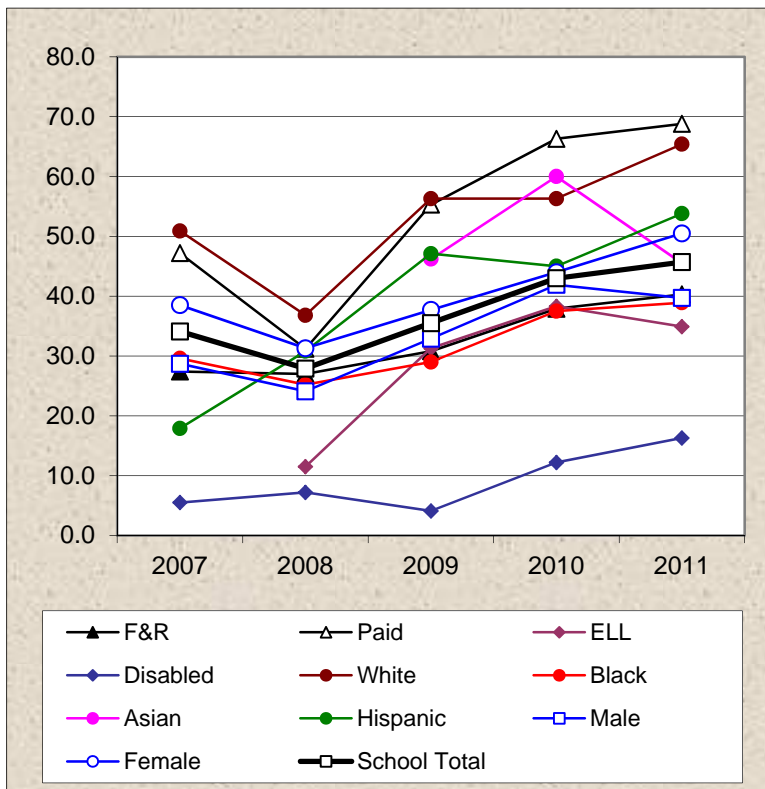


	2007	2008	2009	2010	2011
F&R	24.2	23.6	34.1	38.6	52.5
	190	356	352	329	61
Paid	32.6	40.0	51.9	43.1	
	46	55	54	51	2
ELL		11.1	32.8	48.8	50.0
		45	61	84	16
Disabled	0.0	4.7	6.9	9.3	
	32	85	72	54	10
White	30.0	44.4	42.1	28.3	66.7
	40	54	57	46	3
Black	20.4	19.7	32.0	37.7	50.0
	152	254	247	212	40
Asian		35.7	56.5	70.8	
		14	23	24	3
Hispanic	38.2	29.9	39.0	41.6	60.0
	34	87	77	89	15
Male	27.2	24.7	36.9	39.0	39.1
	136	231	217	195	23
Female	24.0	27.2	36.0	39.5	57.5
	100	180	189	185	40
School Total	25.8	25.8	36.5	39.2	50.8
Number Tested	236	411	406	380	63

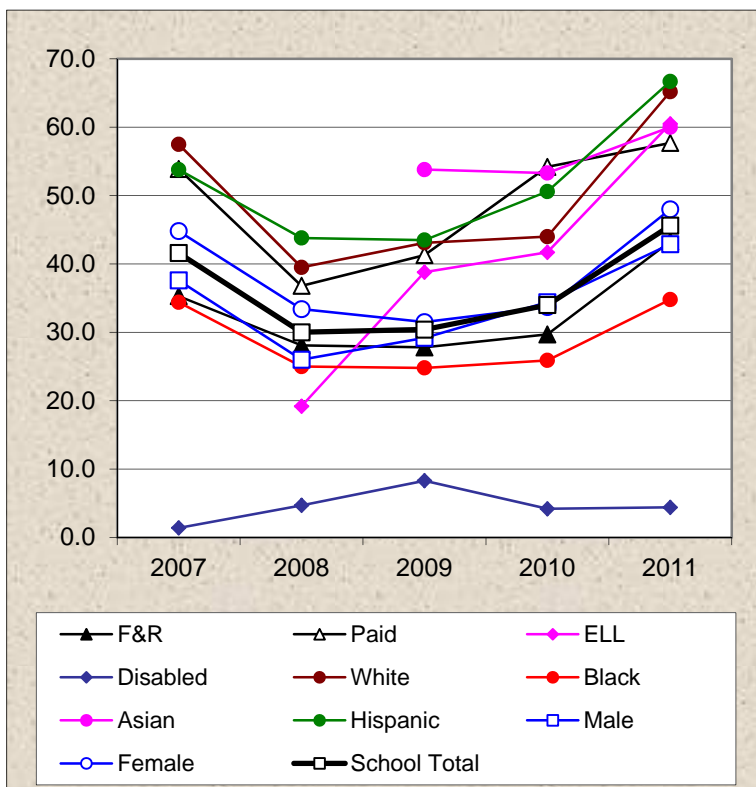
Eisenhower Middle School

Spring MAP Reading Students At/Above 50th Percentile

	2007	2008	2009	2010	2011
F&R	27.4	27.0	30.8	37.9	40.3
	343	441	426	433	286
Paid	47.2	31.2	55.3	66.3	68.8
	163	125	103	95	64
ELL		11.5	31.3	38.3	34.9
		26	48	60	43
Disabled	5.5	7.2	4.1	12.2	16.3
	73	83	73	74	43
White	50.9	36.8	56.3	56.3	65.4
	106	87	71	80	52
Black	29.6	25.2	29.0	37.5	38.9
	351	401	373	336	211
Asian			46.2	60.0	45.5
			13	15	11
Hispanic	17.9	30.8	47.1	45.0	53.8
	39	65	68	80	65
Male	28.7	24.1	32.9	41.9	39.7
	244	266	240	246	156
Female	38.5	31.3	37.7	44.0	50.5
	262	300	289	282	194
School Total	34.1	27.9	35.5	43.0	45.7
Number Tested	508	566	529	528	350



Spring MAP Math Students At/Above 50th Percentile

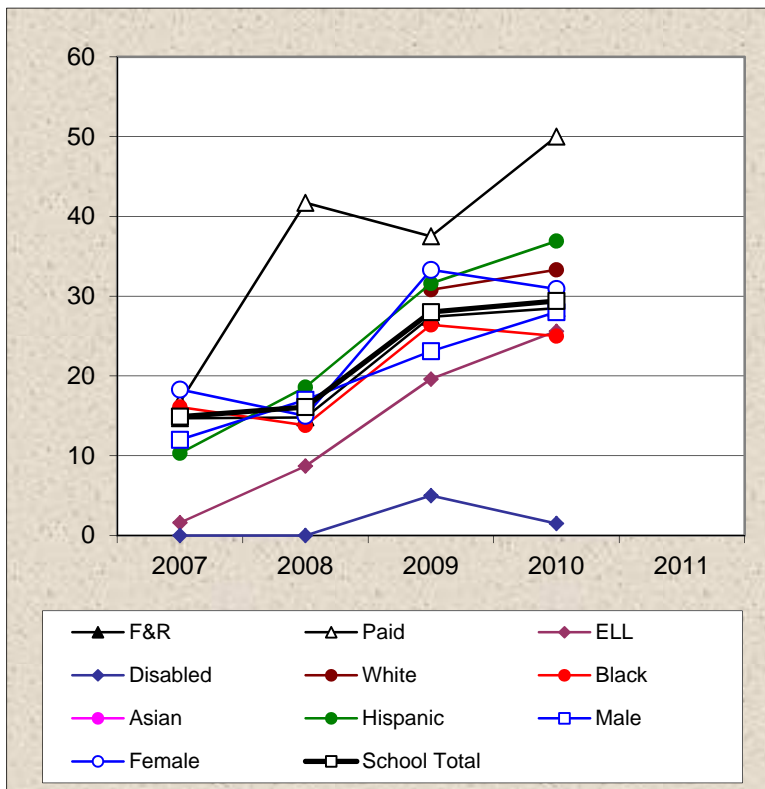


	2007	2008	2009	2010	2011
F&R	35.3	28.1	27.8	29.7	43.3
	348	442	425	448	268
Paid	53.9	36.8	41.3	54.2	57.7
	167	125	104	96	52
ELL		19.2	38.8	41.7	60.5
		26	49	60	38
Disabled	1.4	4.7	8.3	4.2	4.4
	74	85	72	71	45
White	57.5	39.5	43.1	44.0	65.2
	106	86	72	84	46
Black	34.4	25.0	24.8	25.9	34.8
	360	404	371	343	198
Asian			53.8	53.3	60.0
			13	15	5
Hispanic	53.8	43.8	43.5	50.6	66.7
	39	64	69	85	60
Male	37.6	26.0	29.2	34.4	42.9
	245	262	240	250	147
Female	44.8	33.4	31.5	33.7	48.0
	270	305	289	294	173
School Total	41.6	30.0	30.4	34.0	45.6
Number Tested	517	567	529	544	320

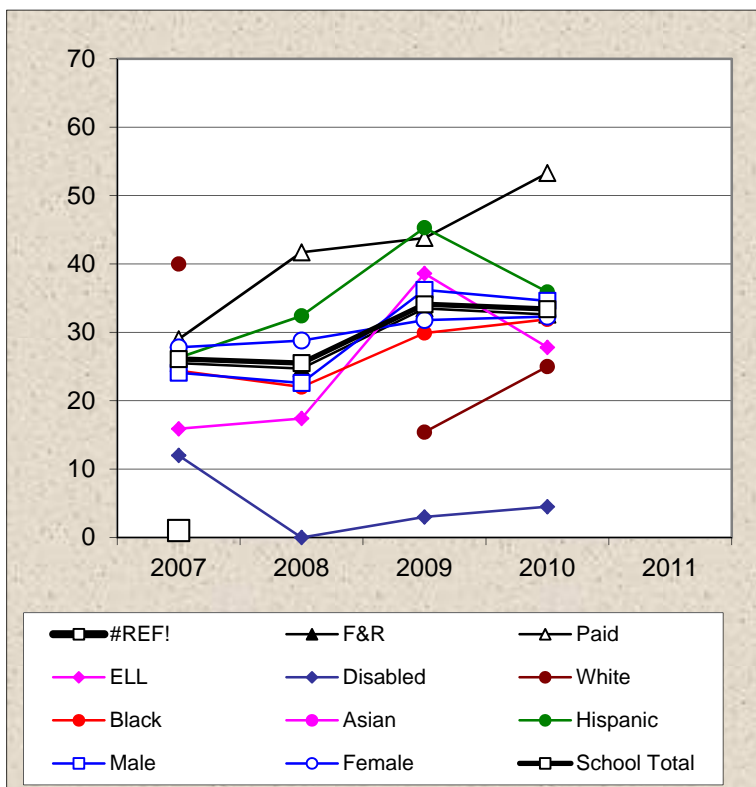
Northwest Middle School

Spring MAP Reading Students At/Above 50th Percentile

	2007	2008	2009	2010	2011
F&R	14.7	14.8	27.4	28.5	
	272	243	263	368	
Paid	16.7	41.7	37.5	50.0	
	36	12	16	16	
ELL	1.6	8.7	19.6	25.6	
	62	46	56	90	
Disabled	0.0	0.0	5.0	1.5	
	36	53	40	68	
White			30.8	33.3	
			13	12	
Black	16.1	13.8	26.4	25.0	
	205	174	182	236	
Asian					
Hispanic	10.3	18.6	31.6	36.9	
	87	70	76	103	
Male	12.0	17.0	23.1	28.0	
	166	135	147	193	
Female	18.3	15.0	33.3	30.9	
	142	120	132	191	
School Total	14.9	16.1	28.0	29.4	
Number Tested	308	255	279	384	



Spring MAP Math Students At/Above 50th Percentile

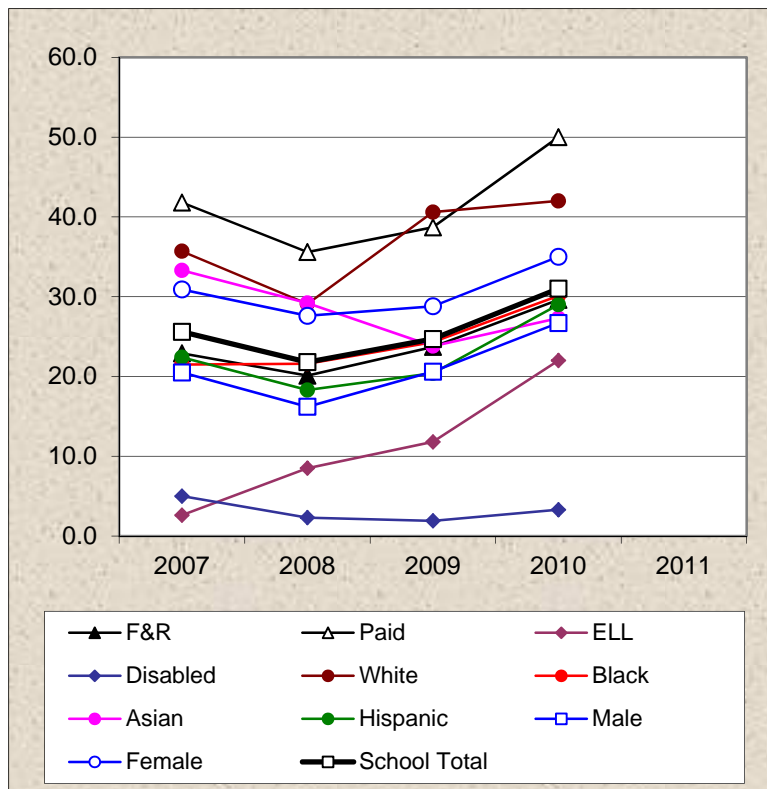


	2007	2008	2009	2010	2011
F&R	25.5	24.7	33.5	32.6	
	282	243	254	368	
Paid	29.0	41.7	43.8	53.3	
	31	12	16	15	
ELL	15.9	17.4	38.6	27.8	
	69	46	57	90	
Disabled	12.0	0.0	3.0	4.5	
	25	51	33	67	
White	40.0		15.4	25.0	
	10		13	12	
Black	24.4	22.0	29.9	31.9	
	201	173	174	235	
Asian					
Hispanic	26.3	32.4	45.3	35.9	
	95	71	75	103	
Male	24.1	22.6	36.2	34.6	
	162	137	138	191	
Female	27.8	28.8	31.8	32.3	
	151	118	132	192	
School Total	26.1	25.5	34.1	33.4	
Number Tested	314	255	270	383	

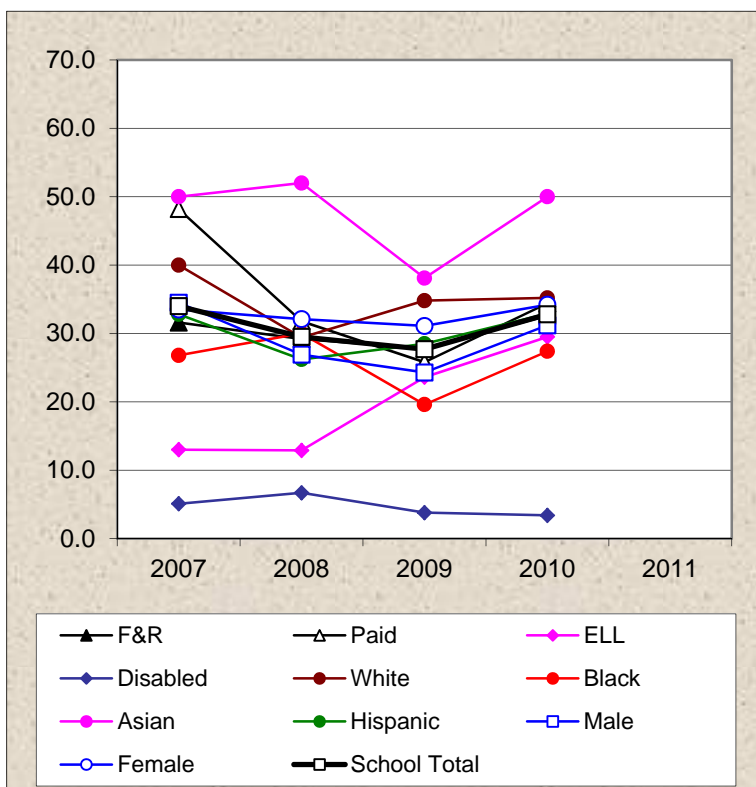
Rosedale Middle School

Spring MAP Reading Students At/Above 50th Percentile

	Spring 2007	Spring 2008	Spring 2009	Spring 2010	Spring 2011
F&R	22.9 328	20.1 368	23.7 426	29.6 436	
Paid	41.8 55	35.6 45	38.7 31	50.0 32	
ELL	2.6 78	8.5 117	11.8 195	22.0 232	
Disabled	5.0 40	2.3 44	1.9 54	3.3 60	
White	35.7 84	29.1 79	40.6 69	42.0 69	
Black	21.5 79	21.6 102	24.3 111	30.1 113	
Asian	33.3 18	29.2 24	23.8 21	27.3 22	
Hispanic	22.4 201	18.3 208	20.4 255	29.0 252	
Male	20.5 195	16.2 210	20.6 228	26.7 225	
Female	30.9 188	27.6 203	28.8 229	35.0 243	
School Total	25.6 383	21.8 413	24.7 457	31.0 468	



Spring MAP Math Students At/Above 50th Percentile

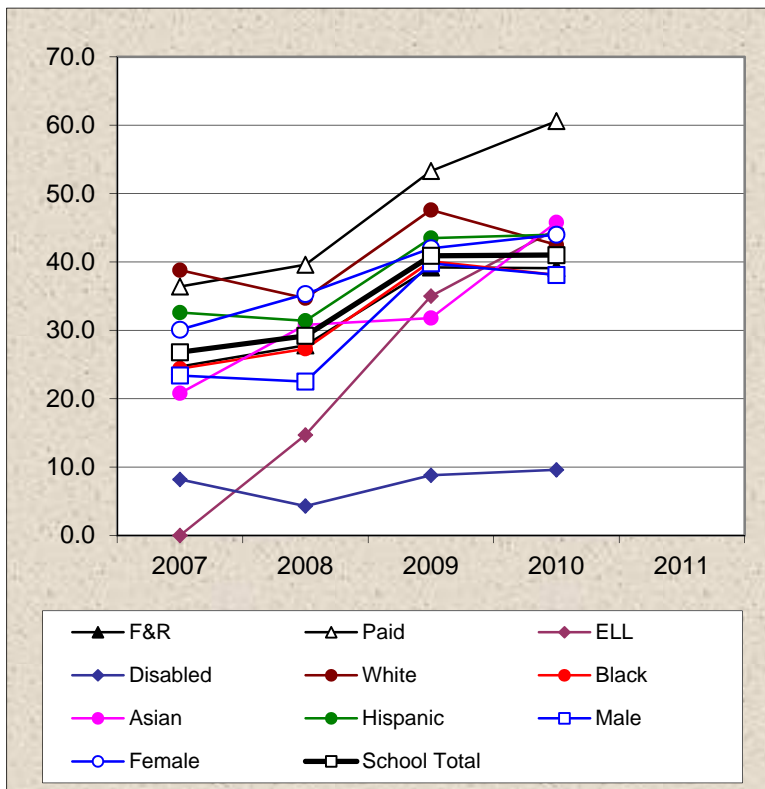


	Spring 2007	Spring 2008	Spring 2009	Spring 2010	Spring 2011
F&R	31.6 332	29.2 377	27.8 410	32.6 432	
Paid	48.2 56	31.8 44	25.8 31	34.4 32	
ELL	13.0 77	12.9 116	23.6 191	29.5 227	
Disabled	5.1 39	6.7 45	3.8 52	3.4 59	
White	40.0 85	29.4 85	34.8 66	35.2 71	
Black	26.8 82	30.0 100	19.6 107	27.4 113	
Asian	50.0 16	52.0 25	38.1 21	50.0 22	
Hispanic	32.8 204	26.2 210	28.5 246	32.9 246	
Male	34.5 200	26.9 212	24.3 222	31.2 221	
Female	33.5 188	32.1 209	31.1 219	34.2 243	
School Total	34.0 388	29.5 421	27.7 441	32.8 464	

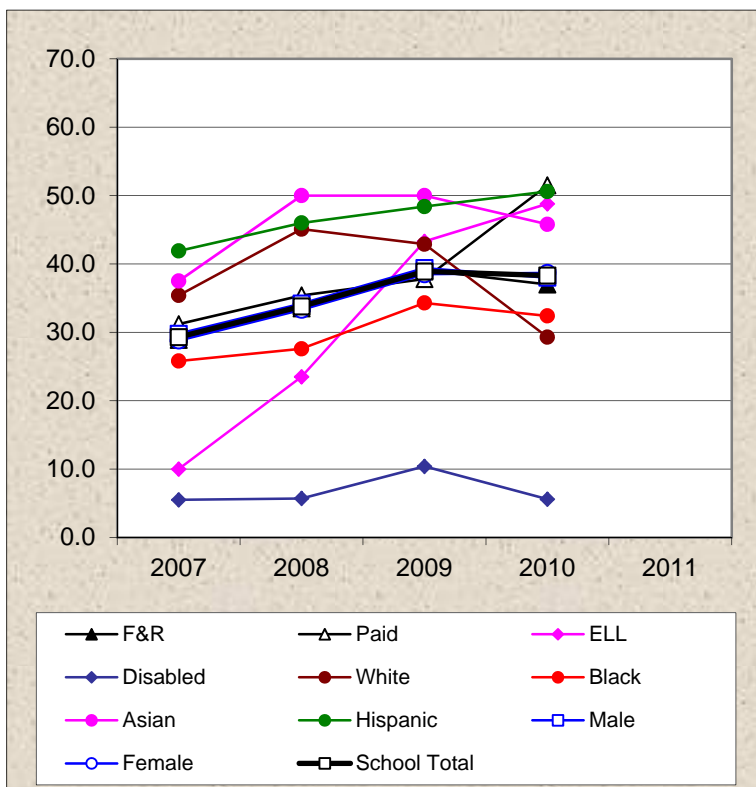
West Middle School

Spring MAP Reading Students At/Above 50th Percentile

	2007	2008	2009	2010	2011
F&R	24.7	27.8	39.2	39.1	
	356	335	314	338	
Paid	36.4	39.6	53.3	60.6	
	77	48	45	33	
ELL	0.0	14.7	35.0	44.8	
	10	34	60	87	
Disabled	8.2	4.3	8.8	9.6	
	73	70	68	73	
White	38.8	34.7	47.6	42.5	
	49	49	42	40	
Black	24.4	27.3	40.1	38.1	
	316	256	232	210	
Asian	20.8	30.8	31.8	45.8	
	24	26	22	24	
Hispanic	32.6	31.4	43.5	44.0	
	43	51	62	84	
Male	23.4	22.5	39.8	38.1	
	214	182	166	189	
Female	30.1	35.3	42.0	44.0	
	219	201	193	182	
School Total	26.8	29.2	40.9	41.0	
Number Tested	433	383	359	371	



Spring MAP Math Students At/Above 50th Percentile



	2007	2008	2009	2010	2011
F&R	28.9	33.5	39.1	37.0	
	357	337	312	335	
Paid	31.2	35.4	37.8	51.5	
	77	48	45	33	
ELL	10.0	23.5	43.3	48.8	
	10	34	60	86	
Disabled	5.5	5.7	10.4	5.6	
	73	70	67	72	
White	35.4	45.1	42.9	29.3	
	48	51	42	41	
Black	25.8	27.6	34.3	32.4	
	318	257	230	207	
Asian	37.5	50.0	50.0	45.8	
	24	26	22	24	
Hispanic	41.9	46.0	48.4	50.6	
	43	50	62	83	
Male	29.8	34.2	39.4	38.0	
	215	184	165	187	
Female	28.8	33.3	38.5	38.7	
	219	201	192	181	
School Total	29.3	33.8	38.9	38.3	
Number Tested	434	385	357	368	