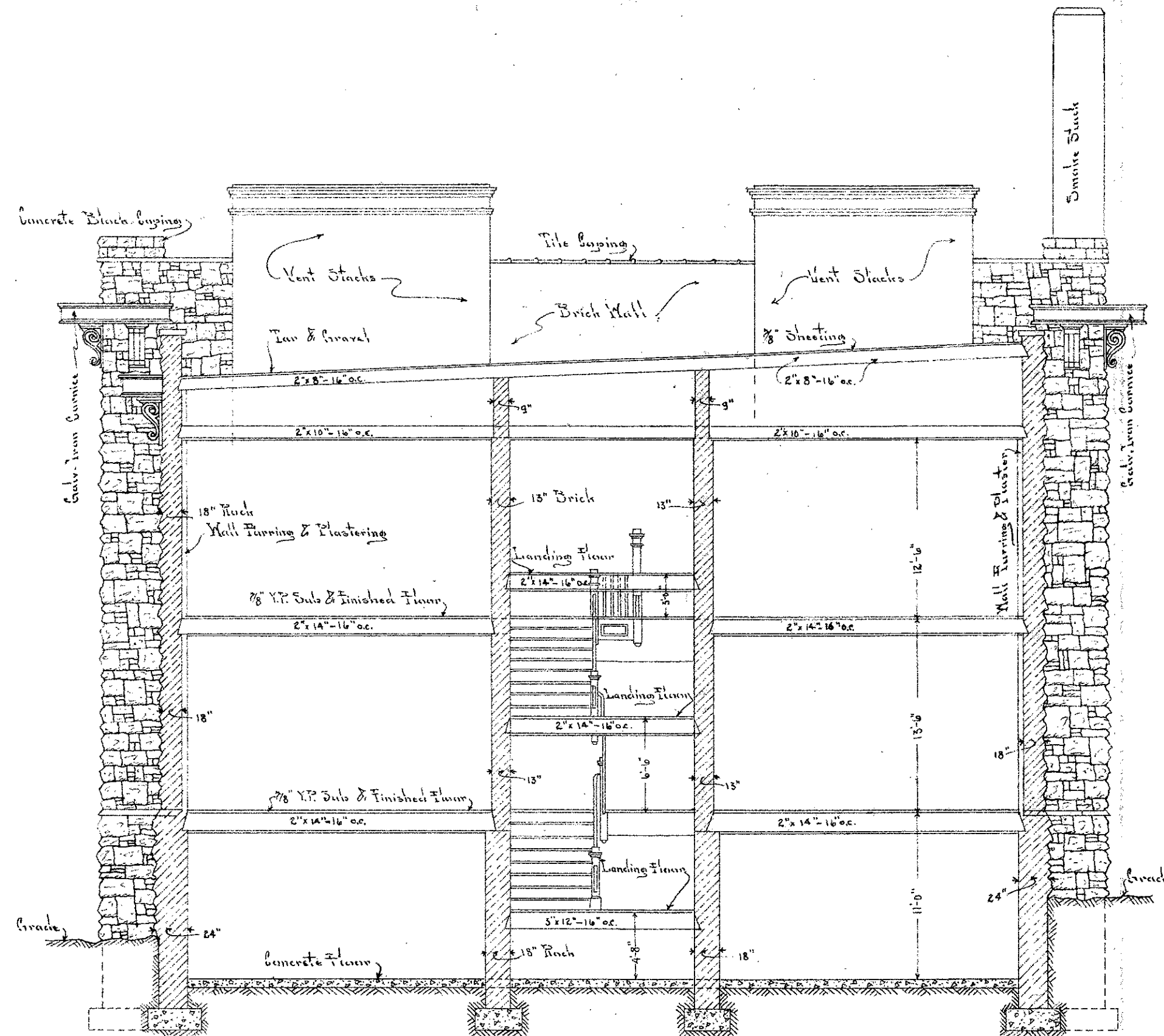


- LONGITUDINAL - SECTION -



- CROSS - SECTION -

ARGENTINE - HIGH - SCHOOL.  
 KANSAS - CITY, KANS.

Southwestern Appraisal Co Kansas City, Mo.
Division - Buildings
Argentine High School Bldg.
Date - August, 1913
Drawn By - C.H.
Traced By - M.L. - Check By - J.C.
Approved - H.H. Lewis No. 18
Scale 3/8" = 1 Foot