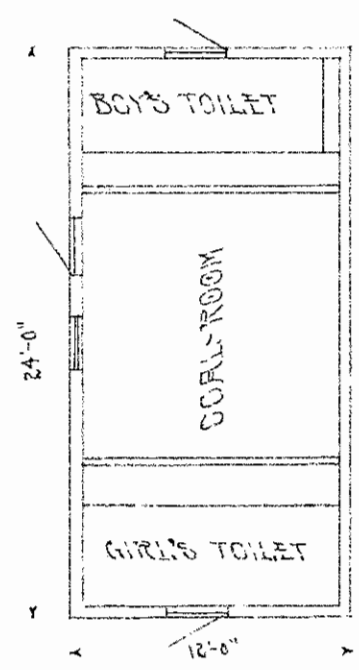
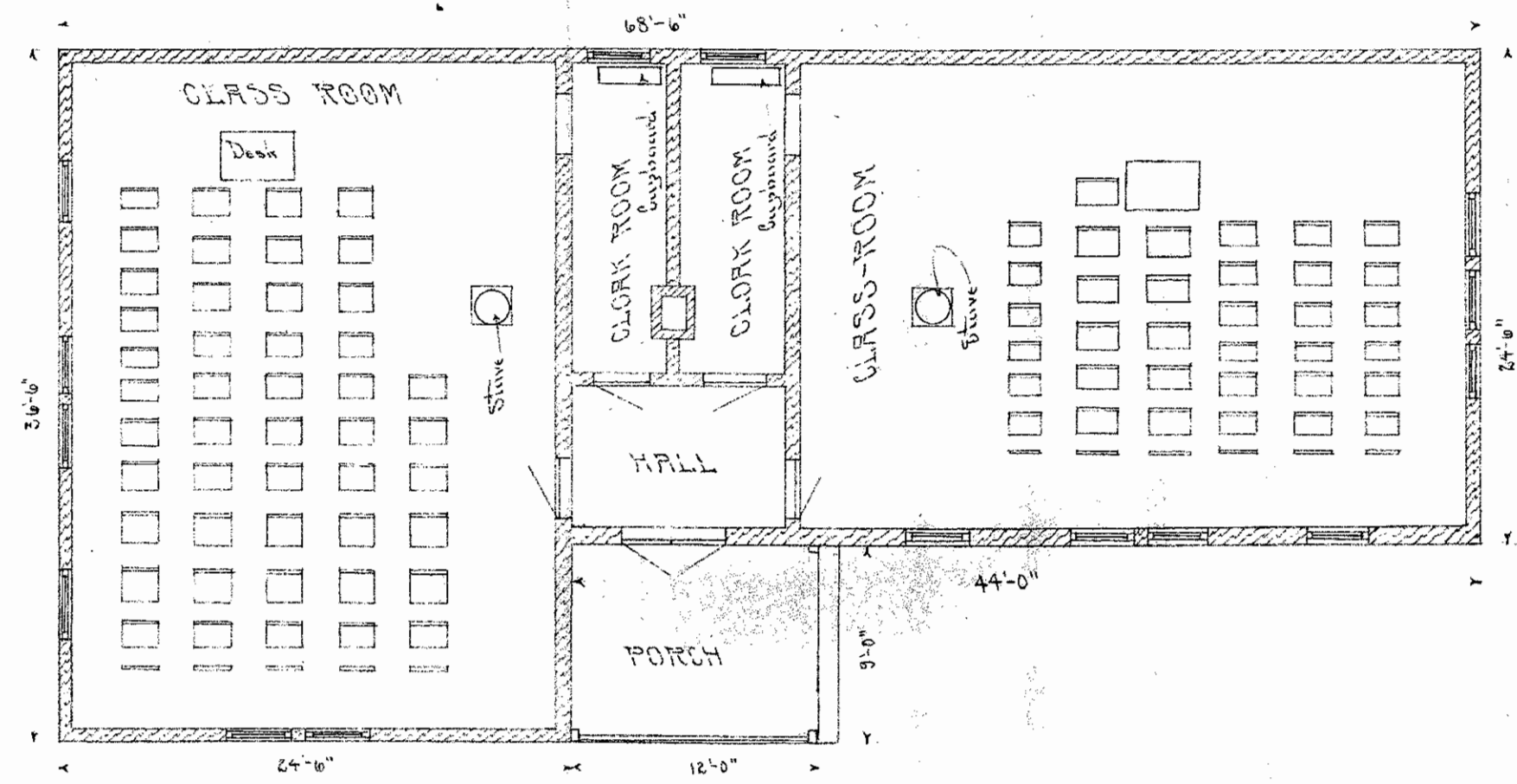


LONGITUDINAL - SECTION - LOOKING - NORTH



COAL-HOUSE



FLOOR-PLAN

BRUCE - SCHOOL

Southwestern Architectural Co.	
Kansas City, Mo.	
Division - Plans & Cross Section	
Bruce School K.C.K.	
Date - Oct. 1913.	
Drawn - H.A.H.	
Traced by J.F.	Checked by A.B.
Approved by H.A.H.	
Scale 3/8" = 1'-0"	