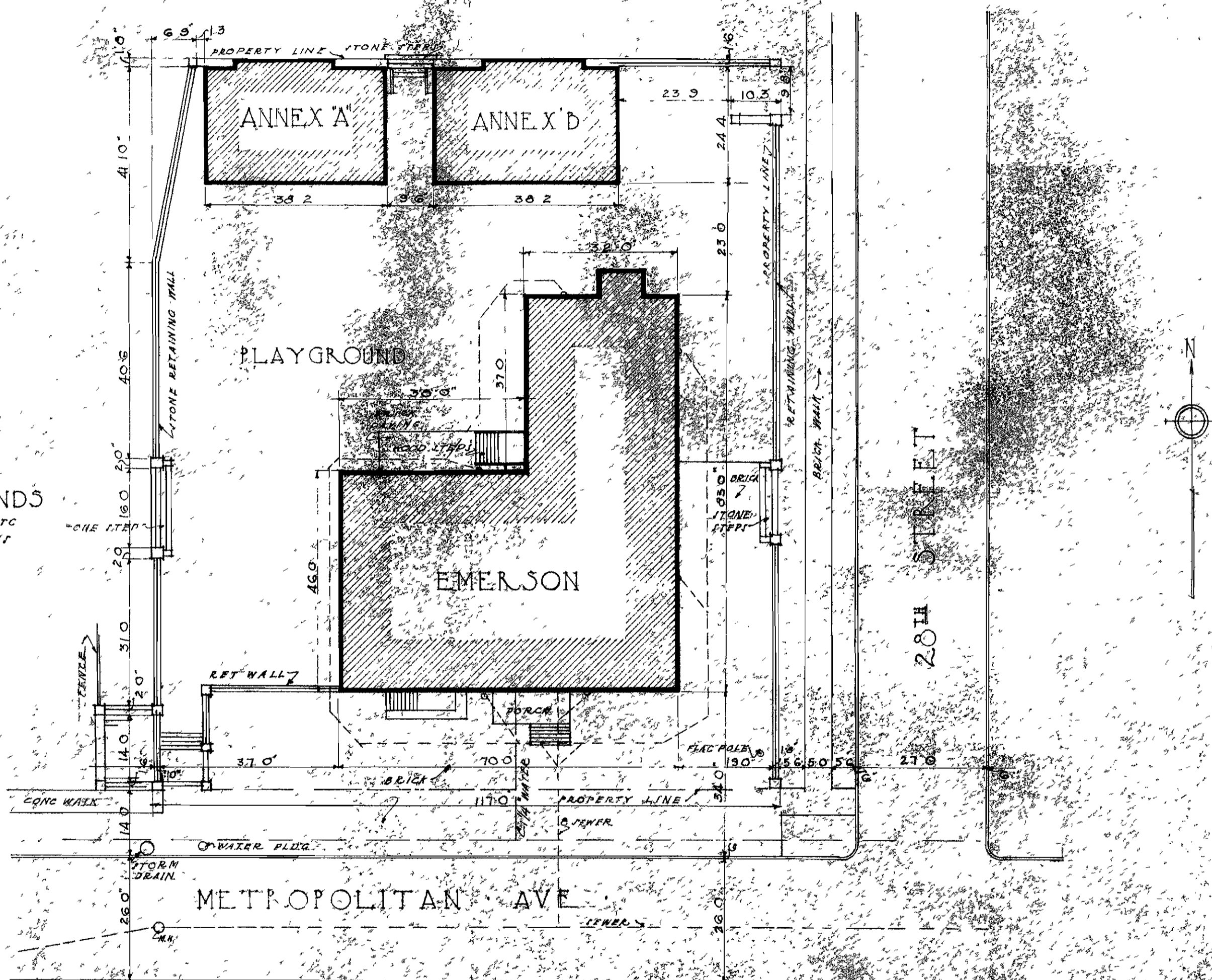


CITY PARK

PARK GROUNDS
SCHOOL, SWING, ETC
ON THEIR GROUND



PLOT PLAN
SCALE 1/8" = 10' ± 30'

EMERSON SCHOOL

TOPPING VALUATION COMPANY	
KANSAS CITY, MISSOURI	
DATE: 11/10/22	DRAWN: JAC
TRACED: JAC	CHECKED: JAC
APPROVED: JAC	