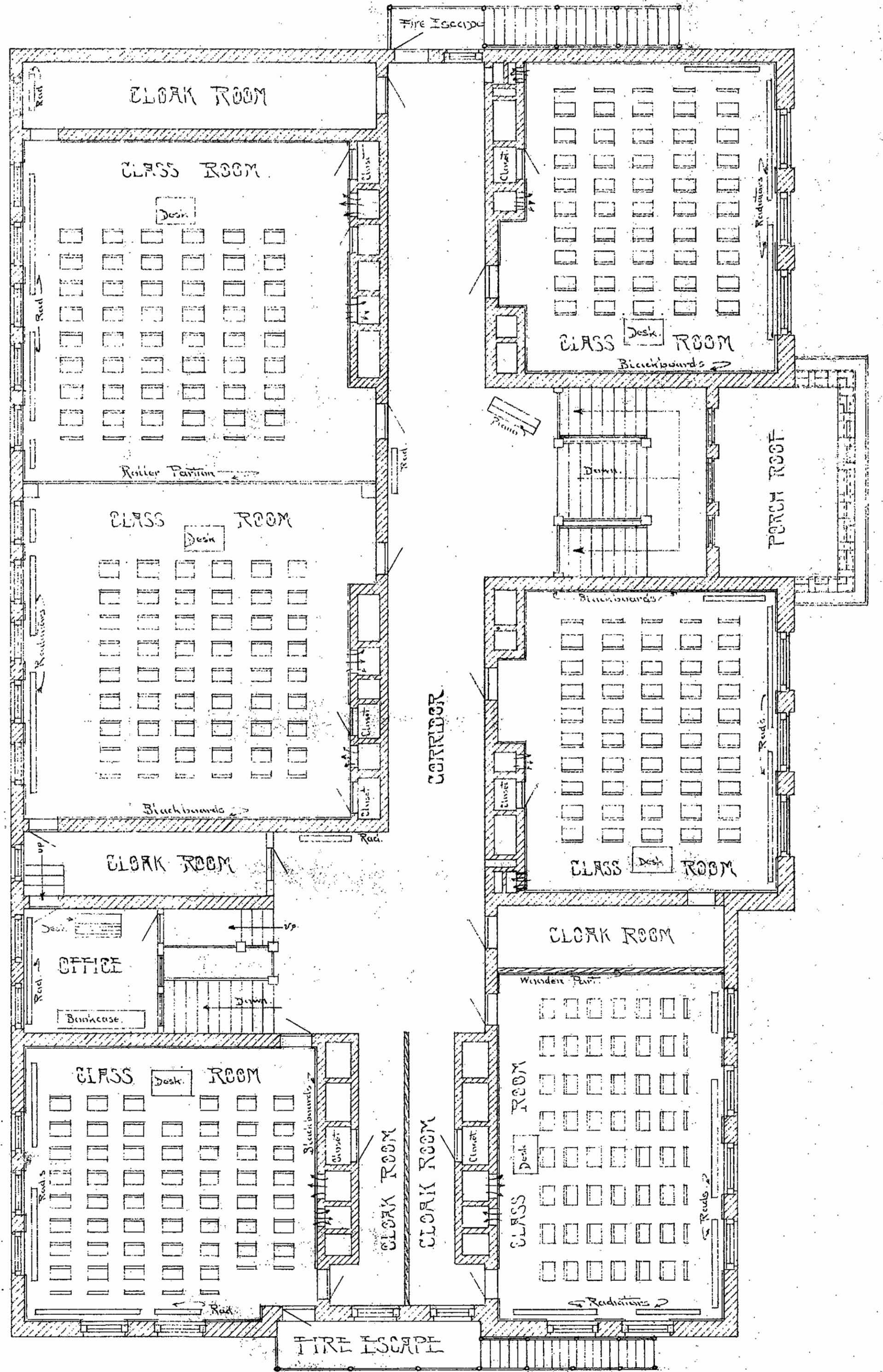


SECTION-LOOKING EAST



SECOND FLOOR PLAN

JOHN - FISKE - SCHOOL

Southwestern Appraisal Co.
 Kansas City, Mo.
 Division - John Fiske School
 Kansas City, Mo.
 Date - Dec. 1913.
 Drawn - C.H.G.
 Revised - C.H.G. Child - G.F.
 Approved - C.H.G.
 Scale - 1/4" = 1' - 0"