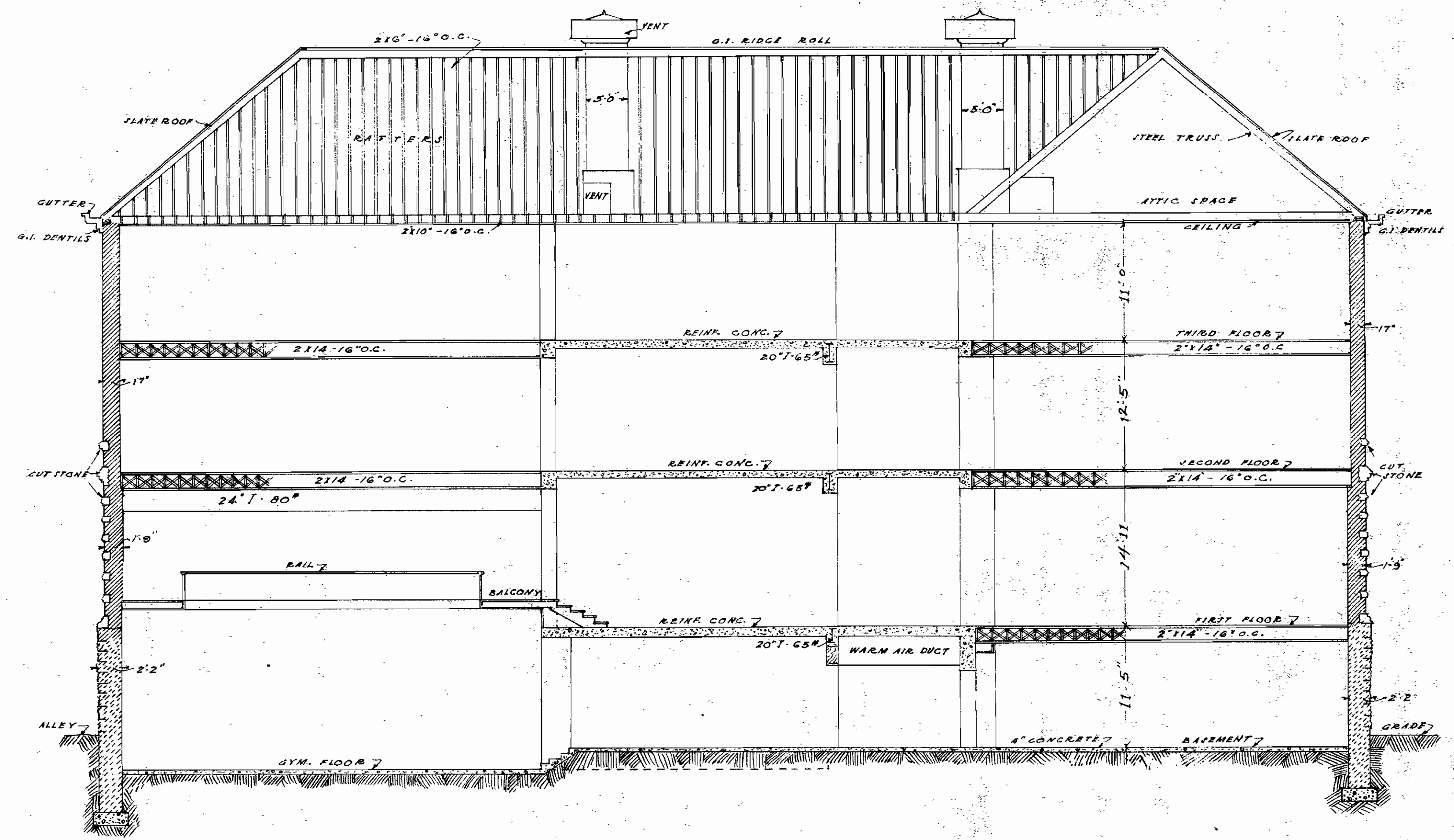


DOOR SCHEDULE

| MARK | SIZE | GLASS | TRANSOM |
|----------------|--------------------|-------------|-----------|
| C | 3-0 X 7-0 1/4 | 4-12 X 24 | 2-8 X 16 |
| D | 2-4 1/2 X 7-0 1/4 | | |
| E | 2-8 X 6-8 1/4 | | |
| E ² | 2-8 X 6-8 1/4 | | 20 X 20 |
| F | 2-8 X 7-0 | 20 X 24 | 2-8 X 32 |
| G | 2-6 X 6-8 1/4 | | |
| H | 2-10 X 6-8 1/4 | | |
| H ² | 2-10 X 6-8 1/4 | 20 X 24 | 2-8 X 20 |
| I | 3-6 X 9-0 | 28 X 30 | 28 X 16 |
| J | 2-8 X 7-10 1/4 | 20 X 24 | |
| K | 3-6 X 7-0 1/4 | 24 X 28 1/2 | |
| L | 2-10 X 9-0 X 2 1/4 | 1-21 X 30 | |
| L ² | 2-10 X 9-0 X 2 1/4 | 1-21 X 14 | |
| L ³ | 2-10 X 9-0 X 2 1/4 | 12-0 X 18-0 | |
| M | 2-10 X 9-0 X 2 1/4 | 28 X 34 | |
| M ² | 2-10 X 9-0 X 2 1/4 | 28 X 21 | |
| P | 2-4 1/2 X 7-0 1/4 | | 2-26 X 28 |
| Q | 4-6 X 7-0 | | |
| S | 3-0 X 7-6 X 2 1/4 | 4-12 X 16 | 4-17 X 17 |
| T | 2-2 X 7-0 X 1 1/4 | | |
| U | 3-2 X 7-0 X 1 1/4 | | |
| V | SEE "F" | | |
| W | 3-0 X 7-0 X 1 1/4 | | |
| W ² | 3-0 X 7-0 X 1 1/4 | | 32 X 8 |
| W ³ | 3-0 X 7-0 X 1 1/4 | 24 X 30 | 18 X 20 |
| W ⁴ | 3-0 X 7-0 X 1 1/4 | 24 X 24 | 32 X 28 |
| Y | 2-6 X 7-0 X 1 1/4 | | |
| Y ² | 2-6 X 7-0 X 1 1/4 | 18 X 22 | 2-28 X 24 |
| Y ³ | 2-6 X 7-0 X 1 1/4 | | 2-28 X 10 |
| Z | 2-10 X 7-0 X 1 1/4 | | |
| Z ¹ | " | 22 X 24 | 30 X 28 |
| Z ² | " | | 30 X 10 |
| Z ³ | " | | 30 X 16 |
| Z ⁴ | " | | 24 X 30 |
| Z ⁵ | " | 26 X 41 | |
| Z ⁶ | " | | 8 X 30 |
| Z ⁷ | " | | |



NORTH WING
SECTION LOOKING NORTH
SCALE 0 2 4 6 8 12
K.C.K. HIGH SCHOOL

TOPPING VALUATION COMPANY
of
KANSAS CITY, MISSOURI
DATE Oct 1922 DRAWN R.W.
TRACED R.W. CHECKED A.B.S.
APPROVED G.P.C.