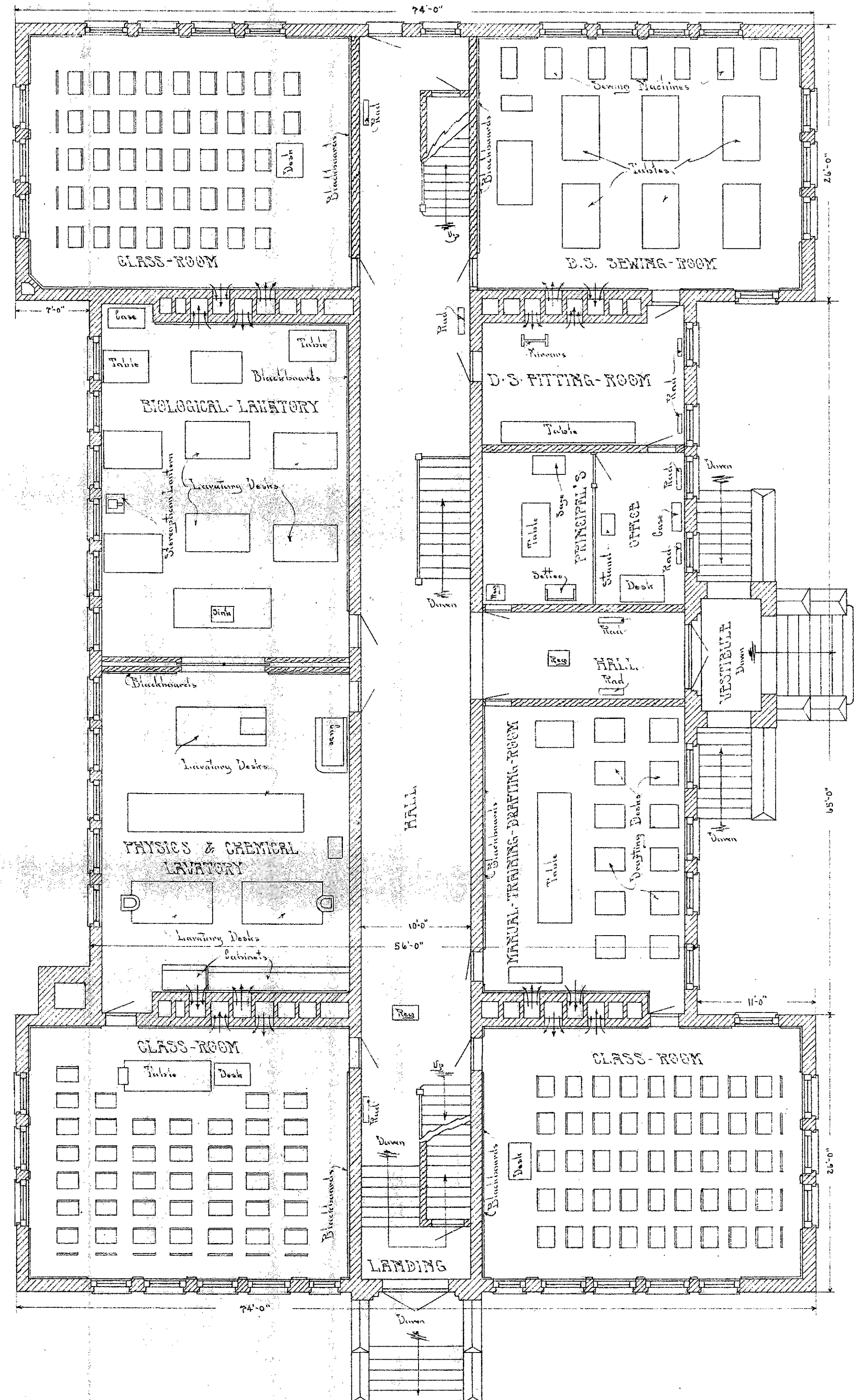


BASEMENT-FLOOR-PLAN



FIRST-FLOOR-PLAN

- SUMNER-HIGH-SCHOOL-

| |
|---|
| Continuation Approval Co Kansas City, Mo |
| Division- Basement & 1st Floor Sumner High School, K.C., Mo. |
| Date- August, 1913 |
| Drawn By- C.H. |
| Traced By- J.H. Sibley By- J.H.S. |
| Approved- J.H. Sibley No. 14 |
| Scale- 1/8" = 1' FOOT |