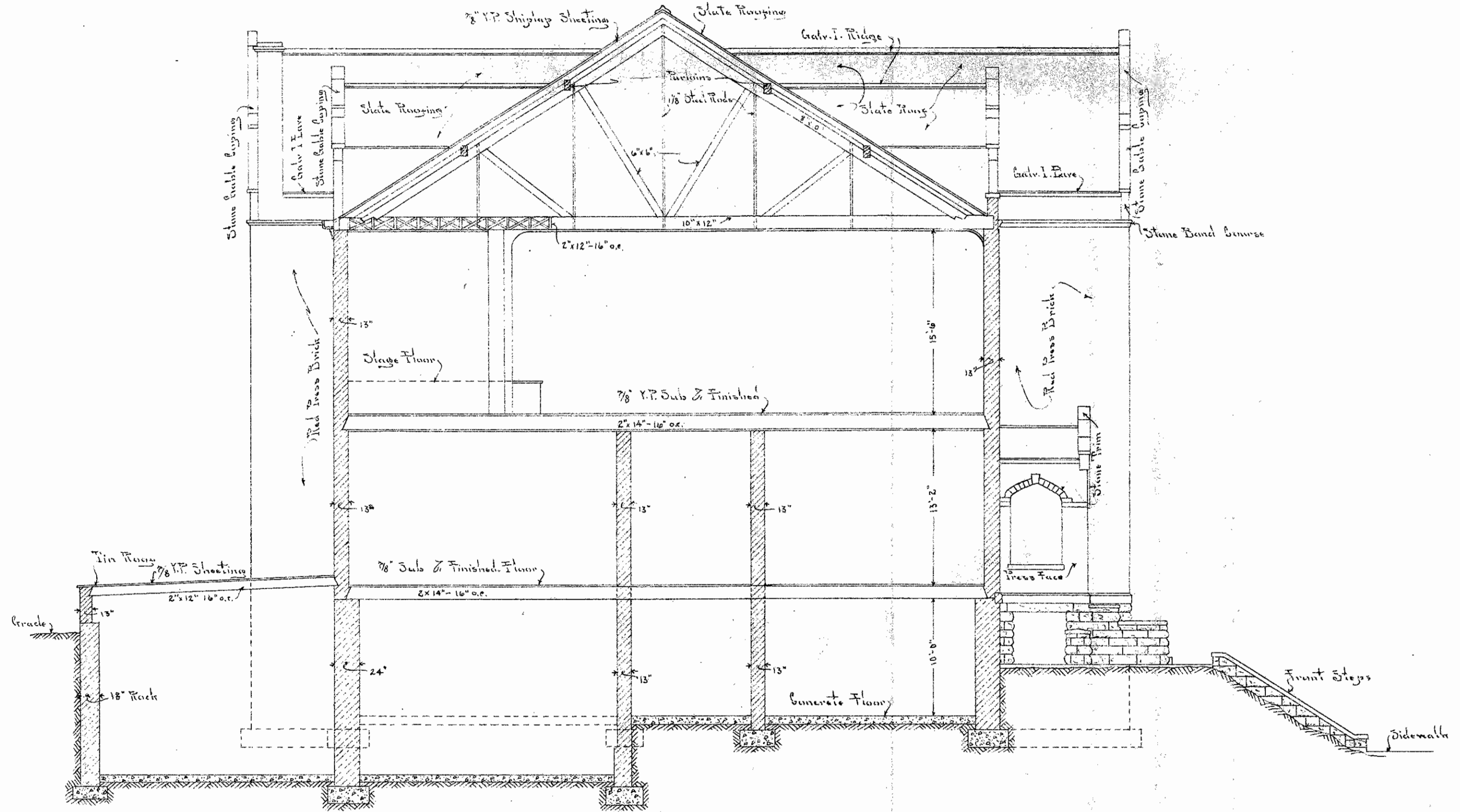


LONGITUDINAL - SECTION



CROSS - SECTION

SUMNER - HIGH - SCHOOL

Investment Appraised by	Kansas City, Mo.
Division - Sections	Sumner High School Bldg.
Date - Plan set	1915
Drawn by - G.H.	
Traced by - G.H.	Checked by - G.H.
Approved by - G.H.	10-16
Scale - 1/4\"/>	