

Week of February 4 – 8, 2008

PIP Table of Contents

02-04-08 NO PIP

02-05-08 NO PIP

02-06-08 NO PIP

02-07-08

Alternate Assessment Resources and Procedures (Jim Heiman)2

Locations for Content Wednesday – Feb. 13 (Deirdre Gooden)4

02-08-08 NO PIP

PIP
MEMO

02/07/08



to: Principals and School Test Coordinators
from: Jim Heiman, Assessment Coordinator
subject: Alternate Assessment Resources and Procedures
date: February 7, 2008

Time Lines for Reading/Math and for Science/History-Government Alternate Assessments

1. January 2 – April 14 is the Reading/Math alternate assessment window,.
2. Apr 22 is the deadline for entering Reading/Math alternate assessment scores on-line.
3. May 9 –The Science/History-Government alternate assessment window closes
4. May 16 – The Science/History-Government alternate assessment score entry deadline.

Sources for Materials

5. The process for selection, data collection, and scoring of alternate assessments can be found in the Kansas Alternate Assessment Teachers Guide 07-08. Both the Teachers Guide and Extended Standards can be found at <http://www.kansped.org/ksde/assmts/ksalt/ksalt.html>
6. Also at the same website you can find
 - a. The Kansas Alternate Assessment and KAMM Fact Sheet (also attached to this memo)
 - b. Kansas Alternate and KAMM Eligibility
 - c. The How To's of Kansas Alternate Assessment (07-08)
 - d. Scoring the 2008 Alternate Assessment
7. Several Evidence Label options are available for download from the KSDE website, www.kansped.org.
8. Once you login at CETE with the administrator account login and password, you may click on the Alt. Assessment link and
 - a. Print lists of available indicators
 - b. Print lists of chosen indicators
 - c. Define alternate Assessments by choosing indicators
 - d. Print worksheets for recording student scores
 - e. Print the Alternate Assessment Implementation Manual. This is a very useful resource which provides a detailed step-by-step process for the Alternate Assessment.
9. You can also find Indicator Reports for students who took Alternate Assessments last year. This is necessary because you may not select an indicator for this year if the student scored proficient on that indicator in the past.

Logins and Passwords

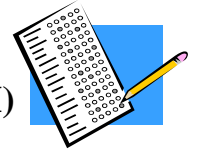
10. For **building administrators**: Even if you already have a CETE login you must apply for a separate login for the Alternate Assessment. Set your web browser to cete.us and above the login box on the right side click on the link "Need a New Account?" In the Account Type box select "Alternate Assessment Building". In the District box, select "D0500 Kansas City". Follow the prompts through to complete the login procedure. You will need to wait a day to have the account approved at the district, but you will be notified by email when that approval takes effect. The login is automatic at that point.
11. For **raters**: Alternate assessment raters will also have to apply for an Alternate Assessment login. They follow the same procedure as above except for Account Type, they select "Alternate Entry".

Questions?

12. Email jiheima@kckps.org or call Jim Heiman, Cell Phone 913-645-3538



KANSAS ALTERNATE ASSESSMENT & KANSAS ASSESSMENT OF MODIFIED MEASURES (KAMM) Fact Sheet 2007-2008



General Information about Alternate Assessment

- Assessment participation is determined by the student's IEP team
- Will be administered annually
- Grades 3-8, and once in high school for reading and math.
- Writing will be given once in high school
- Social Studies will be given to students in grades 6,8 and once in high school
- Science will be given to students in grades 4,7 and once in high school
- Reading and Math results will be used to calculate AYP

Alternate Assessment Extended Standards

- Revised extended standards manuals in social studies and sciences will be available in August, 2007
- In each content area chapter 3 lists the extended indicators aligned with the general indicator being assessed at each grade level
- Important Note: *If the student being assessed scored at Exceeds Standard or Exemplary on an indicator during the previous year's alternate assessment, that indicator **may not** be chosen for this current year's assessment.*
- Extended standards available at <http://www.kansped.org/ksde/assmts/ksalt/ksalt.html>

Test Format

- The assessment will include:
 - Five extended indicators from reading from the grade level in which the student is enrolled (one each of 2 standards and three at large)
 - Five extended indicators from mathematics from the grade level in which the student is enrolled (one each of 4 standards and one at large)
 - Five extended indicators from writing from the grade level in which the student is enrolled (one each of 3 standards and two at large)
 - Five extended indicators from social studies from the grade level in which the student is enrolled (one each of 4 standards and one at large)
 - Five extended indicators from science from the grade level in which the student is enrolled (choose 5 of 7 standards)
- Data is collected during the testing window
- One scoring rubric (skill level) is to be used
- Local scoring will be accomplished by three scorers which must include the special education teacher

Required Forms

- Required forms can be found in the Alternate Assessment Teacher's Guide - <http://www.kansped.org/ksde/assmts/ksalt/ksalt.html>

- Parent permission is required for video or audio taping and photographs
- **IEP Contents**
- Students who take the alternate assessment in any content area will have IEP benchmarks or short-term objectives
- The indicators chosen for the Alternate Assessment may be listed on the student's IEP

Scores Reported

- Student performance levels will be reported
- Actual scores will be reported in the building level results at the indicator level
- One percent of the scores will be counted as "Meets Standard" or above for the district and state AYP reports

Performance Levels

- Five levels: Exemplary, Exceeds Standard, Meets Standard, Approaches Standard, Academic Warning
- Cut scores available at www.cete.ku.edu

Testing Window

- Proposed dates January 2, 2008 to April 15, 2008

General Information about Kansas Assessment of Modified Measures (KAMM)

- **For any content area assessed for KAMM the student's IEP goals *MUST* be based on grade level content standards.**
- The KAMM testing windows is the same as the general education testing window
- Only 2% of scores will be counted as Meets Standard or above for district and state AYP reports
- KAMM is based on grade level indicators
- Primarily computer-based. Paper and pencil versions will be available as an accommodation

Accommodations

- The accommodations are used for classroom instruction and classroom testing
- These accommodations provide equity rather than advantage
- Accommodations manual available at - <http://www.kansped.org/ksde/assmts/ksgen/ksgen.html>

Number of Students in a Building Required for Disaggregation

The number of students in a building required for disaggregation is thirty for ELL, ethnicity, migrant, SES, and students with disabilities (NOTE: change from 2004/05).

Locations for Content Wednesday February 13, 2008

Group	Location(s)	Contact Person
SECONDARY:		
Middle School Reading and Language Arts	Middle School Literacy will meet at Rosedale Middle	Sue Pierce
High School Language Arts High School Reading Enhancement High School/Middle School Read 180	HS READ 180 will meet in the library at Wyandotte High School HS Reading Enhancement will meet in the library at Wyandotte High School HS Language Arts will meet in the Commons at Harmon High School MS READ 180 will meet with middle school language arts at Rosedale	Margie Ramirez Romona Robson Mary Ann Petrich
Middle School Math	Middle School Math will be staying in their buildings.	April Banks
High School Math	High School Math will be meeting at KCKCC, room 2705	Yandell Toevs
M.S. & H.S. Science	Middle School Science will be at Central Middle School in room 216. High School Science will be by department at their own school site.	Gary Andersen
M.S. & H.S. Social Studies	Social Studies Teachers will meet at Eisenhower Middle School	Brenda Burney
M.S. & H.S. World Languages	will meet in various locations	Paula Biggar
Career and Technical Programs	Middle School Technology Teachers will meet with Alan King Middle School FACS Teachers will meet in room 239 at Washington High School. High School Career And Tech. Ed. Teachers will meet at Washington High School in the ROTC rooms.	Megan Spohrer
K-12 MEETINGS:		
Fairfax Learning Center	Math Teacher will attending meeting with Yandell Toevs' group and The English Teacher will attend the meeting with Margie Ramirez's group	Gloria Johnson
Art, Music, Theatre, PE	DD-- Visual Art: ML/HS @Wyandotte HS Art rooms Elem @ New Stanley Music Instrumental (all) @Schlagle 108 Secondary Choral @Schlagle 109 Elem Vocal @ Schlagle 110 Theatre Schlagle Theatre classroom PE Secondary @Schlagle 102 Elementary @Schlagle 101	Jean Ney
Counselors - ELEMENTARY	Education Center-Front Cafeteria.	Liz Hernandez
Counselors – SECONDARY	Education Center-Front Cafeteria.	Liz Hernandez

ESL	ESL Elementary Teachers and Bilingual Aides – Argentine Middle School Library. ESL Secondary Teachers will meet at the Education Center, room 245 ESL Bilingual Aides will meet at the Education Center, room 244.	Sabina Hacker
K-5 Librarians	All Librarians are to meet at Harmon in the library.	Kathleen Flanagan
6-12 Librarians		Mary Sternshein
Technology Elementary/Middle	Middle School and Elementary Technology will meet in the Fairfax Learning Center at the Education Center	Alan King
SPECIAL EDUCATION:		
ALL	<p>All elementary, middle, and high school SLC, ED and gifted teachers will be with gen. ed. peers for content early release...follow gen. ed. location assignments.</p> <p>All teachers in functional programs will report to room 107 at FL Schlalge...this includes those teachers and paras in the following classrooms/programs...ABC, TMD, SMD, High School functional classrooms. Paras of functional programs report to room 215 at FL Schlalge</p> <p>PARAS and ESL AIDES: Elementary paras will report to Eisenhower art room and music room. Middle paras will report to F.L. Schlagle library. High school paras will report to Schlagle room 328.</p> <p>Nurses: KCKCC Duck pond</p> <p>Speech Pathologists will report to Ed. Ctr. Preschool</p> <p>School psychs, OT's, PT's, Social Workers will report to the IRMC.</p>	Kim Shaw